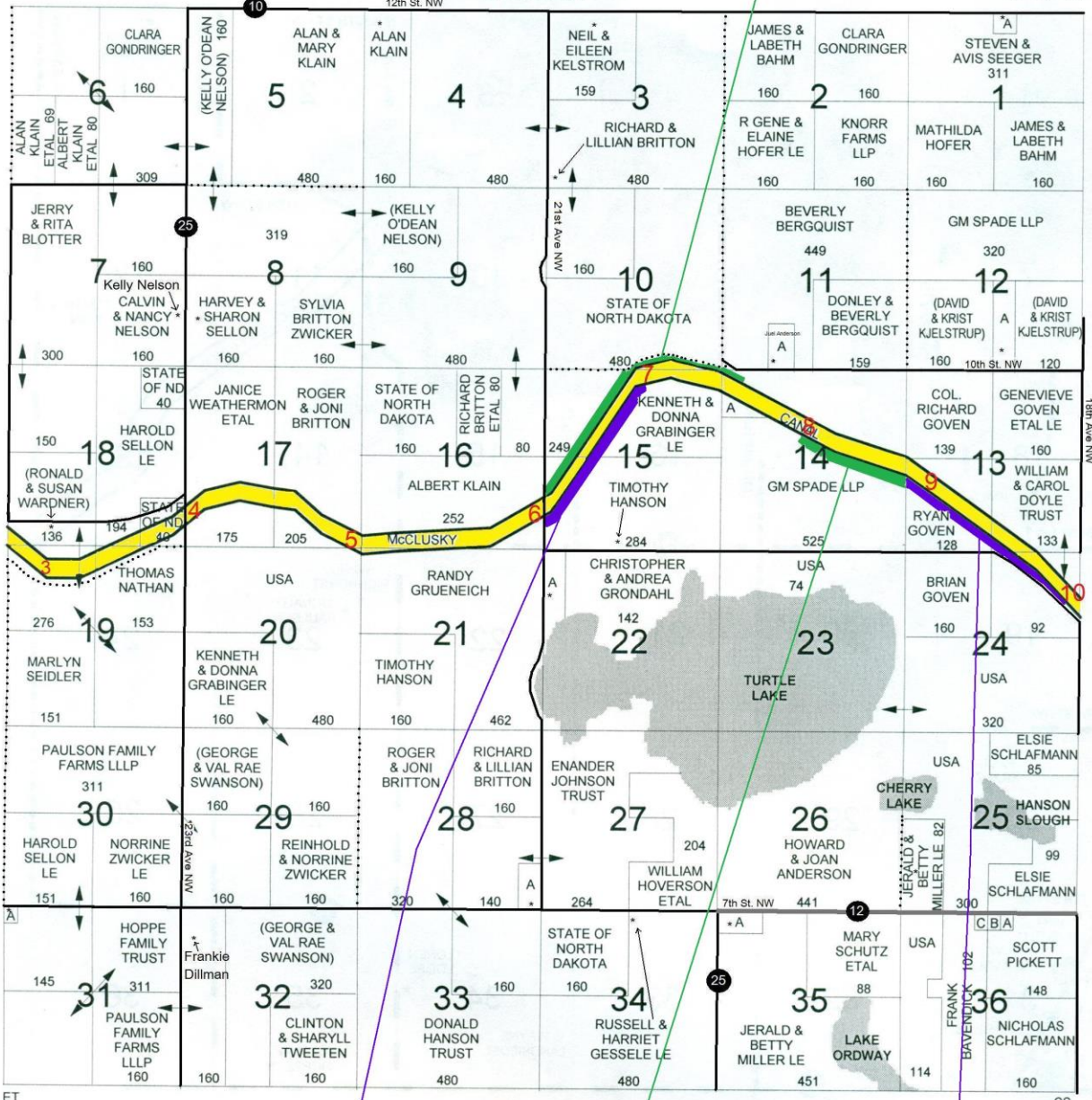


TURTLE LAKE PLAT

MC 6L = 13 /A

T-147-N CODE: BV R-81-W



- 1-A CANDICE MONTONYE - 11 ACRES
- 11-A JUEL & HEIDE ANDERSON - 19 ACRES
- 12-A JOHN HUELSMAN - 40 ACRES
- 14-A KNORR FARMS LLP - 9 ACRES
- 22-A ARCHIE & VICKI REINHART - 20 ACRES

MC 6R = 32 /A

MC 8R = 21.9 /A

- 28-A HOWARD C & JOAN ANDERSON - 20 ACRES
- 31-A GEORGE & HELEN KLEMETSrud - 5 ACRES
- 35-A MARSHALL & PATRICIA MAXWELL - 6 ACRES
- 36-A ROGER ROSSMAN - 5 ACRES
- 36-B KEVIN & LANA SONDRÖL - 5 ACRES
- 36-C JEFFERSON & JANE VOSS ETAL - 1 ACRE

MC 9R = 32 /A

SMALL TRACT OWNERS

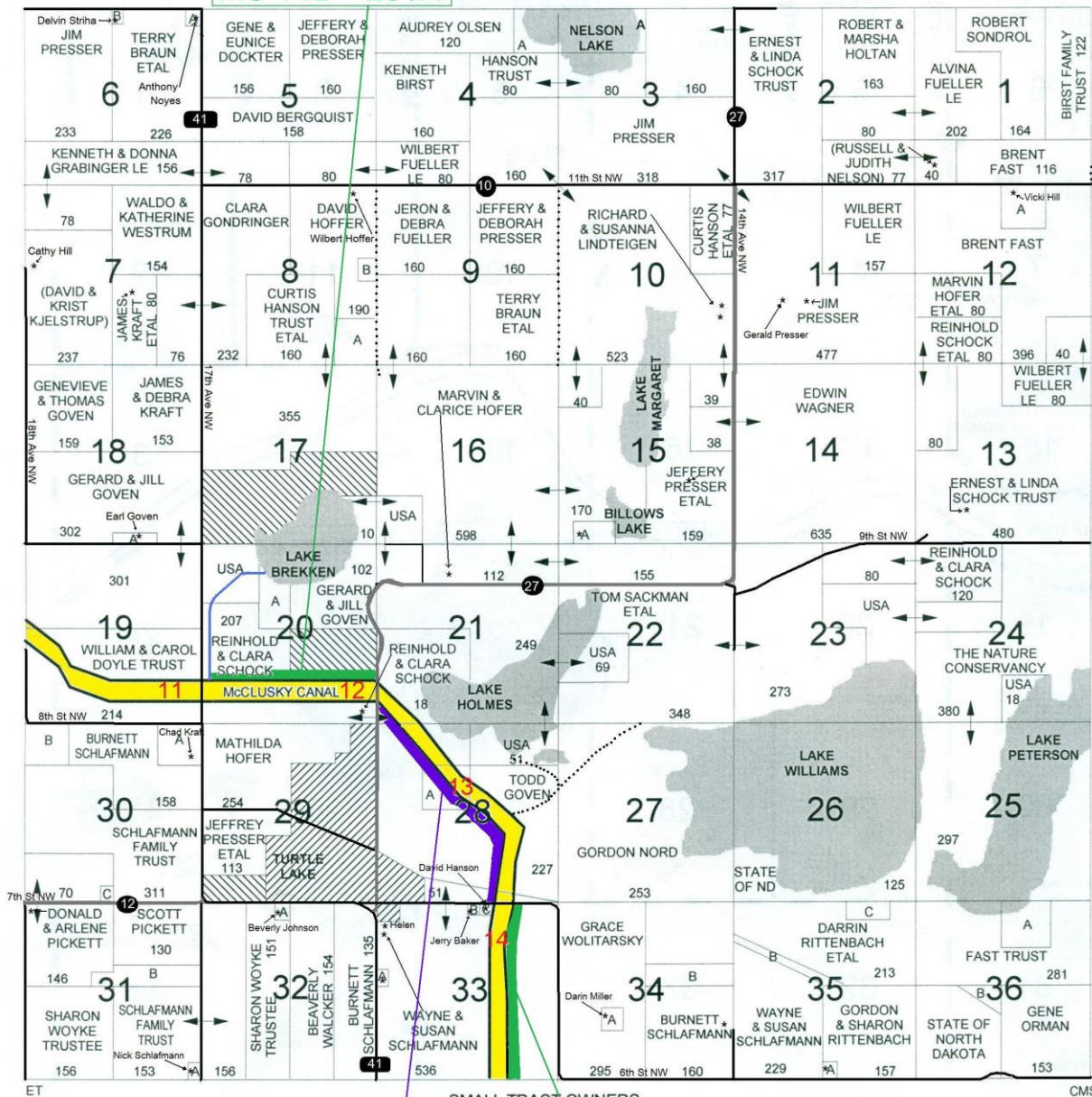
LAKE WILLIAMS PLAT

T-147-N

MC 11L = 26 /A

CODE: BW

R-80-W



SMALL TRACT OWNERS

- 3-A ROBERT & MARSHA HOLTEN - 36 ACRES
- 4-A ROBERT & MARSHA HOLTEN - 39 ACRES
- 6-A ANTHONY & DEBBIE NOYES - 6 ACRES
- 6-B DELVIN & DESIREE STRIHA - 3 ACRES
- 8-A MARVIN & CLARICE HOFER - 40 ACRES
- 8-B MCLEAN-SHERIDAN WATER RES - 10 ACRES
- 12-A VICKIE HILL - 38 ACRES
- 15-A BRUCE & CONNIE NEUMILLER - 19 ACRES
- 18-A EARL & DARLENE GOVEN - 10 ACRES
- 20-A DONALD GOVEN TRUST - 30 ACRES

- 28-A CITY OF TURTLE LAKE - 47 ACRES
- 30-A CHAD KRAFT - 38 ACRES
- 30-B JAMES & DEBRA KRAFT - 38 ACRES
- 30-C DEANN PICKETT - 5 ACRES
- 31-A NICHOLAS SCHLAFMANN - 7 ACRES
- 31-B TURTLE LAKE MUN. AIRPORT AUTH - 27 ACRES
- 32-A BEVERLY JOHNSON - 7 ACRES
- 33-A RONALD SCHLAFMANN ETAL - 3 ACRES

- 33-B DAVID & KATHRYN HANSON - 3 ACRES
- 33-C JERALD & EDITH BAKER - 8 ACRES
- 34-A DARIN MILLER ETAL - 11 ACRES
- 34-B KEMP MAKEEFF - 40 ACRES
- 35-A FRANK & SALLY JERKOVICH TRUST - 3 ACRES
- 35-B WILLIAM FRANK ETAL - 13 ACRES
- 35-C WILLIAM FRANK ETAL - 23 ACRES
- 36-A THE NATURE CONSERVANCY - 29 ACRES
- 36-B GARY & LINDA ORMAN - 16 ACRES

MC 13R = 24 /A

MC 14L = 38 /A