

MC 54L = 44.3 /A

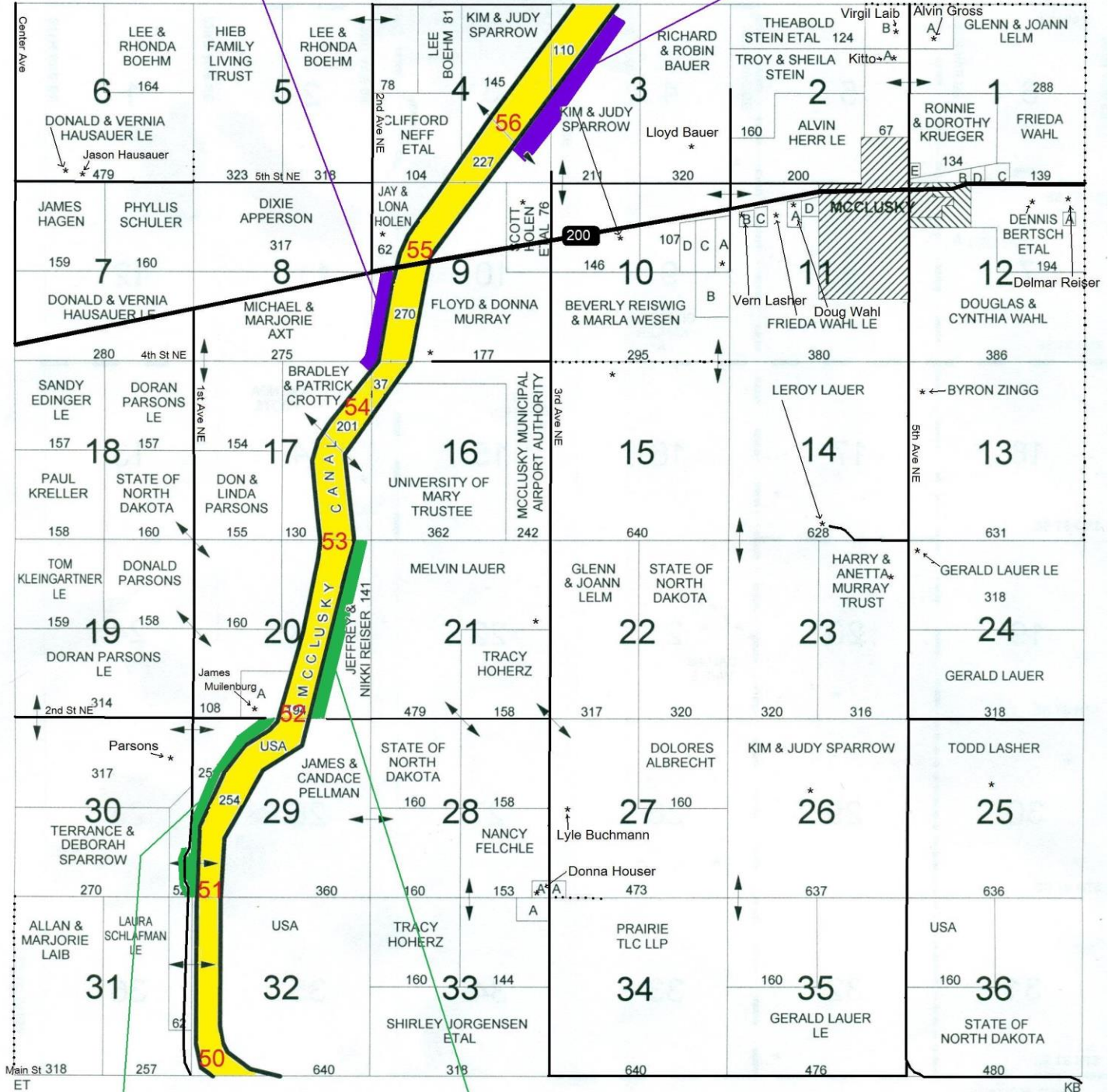
# MCCLUSKY PLAT

MC 56R = 50 /A

T-146-N

CODE: AR

R-77-W



### SMALL TRACT OWNERS

- 1-A ALVIN GROSS - 40 ACRES
- 1-B B B DOCKTER TEST TRUST - 8 ACRES
- 1-C GLENN & JOANN LELM - 8 ACRES
- 1-D JESS & CINDY HOLLENBECK - 2 ACRES
- 1-E HARLEY & LINDA HOUSER - 3 ACRES
- 2-A GERALD & KATHLEEN KITTO - 10 ACRES
- 2-B VIRGIL LAIB - 42 ACRES
- 10-A JON & PAULINE SPARROW - 10 ACRES
- 10-B CITY OF MCCLUSKY - 25 ACRES
- 10-C ORRIN HOLEN CONSTRUCT INC - 19 ACRES
- 10-D RICHARD BRACKETT LE - 3 ACRES

- 11-A DOUGLAS & CYNTHIA WAHL - 1 ACRE
- 11-B VERNON & JOAN LASHER - 7 ACRES
- 11-C MARVIN & CONNIE JEROME - 1 ACRE
- 11-D BEHMS PROPANE INC - 2 ACRES
- 12-A DELMER & CAROL REISER - 2 ACRES
- 20-A JAMES & PAMELA MUILENBURG - 34 ACRES
- 27-A MERLE & DONNA HOUSER - 3 ACRES
- 28-A MERLE & DONNA HOUSER - 5 ACRES
- 33-A MERLE & DONNA HOUSER - 15 ACRES

MC 51L = 73.2 /A

MC 52R = 56 /A



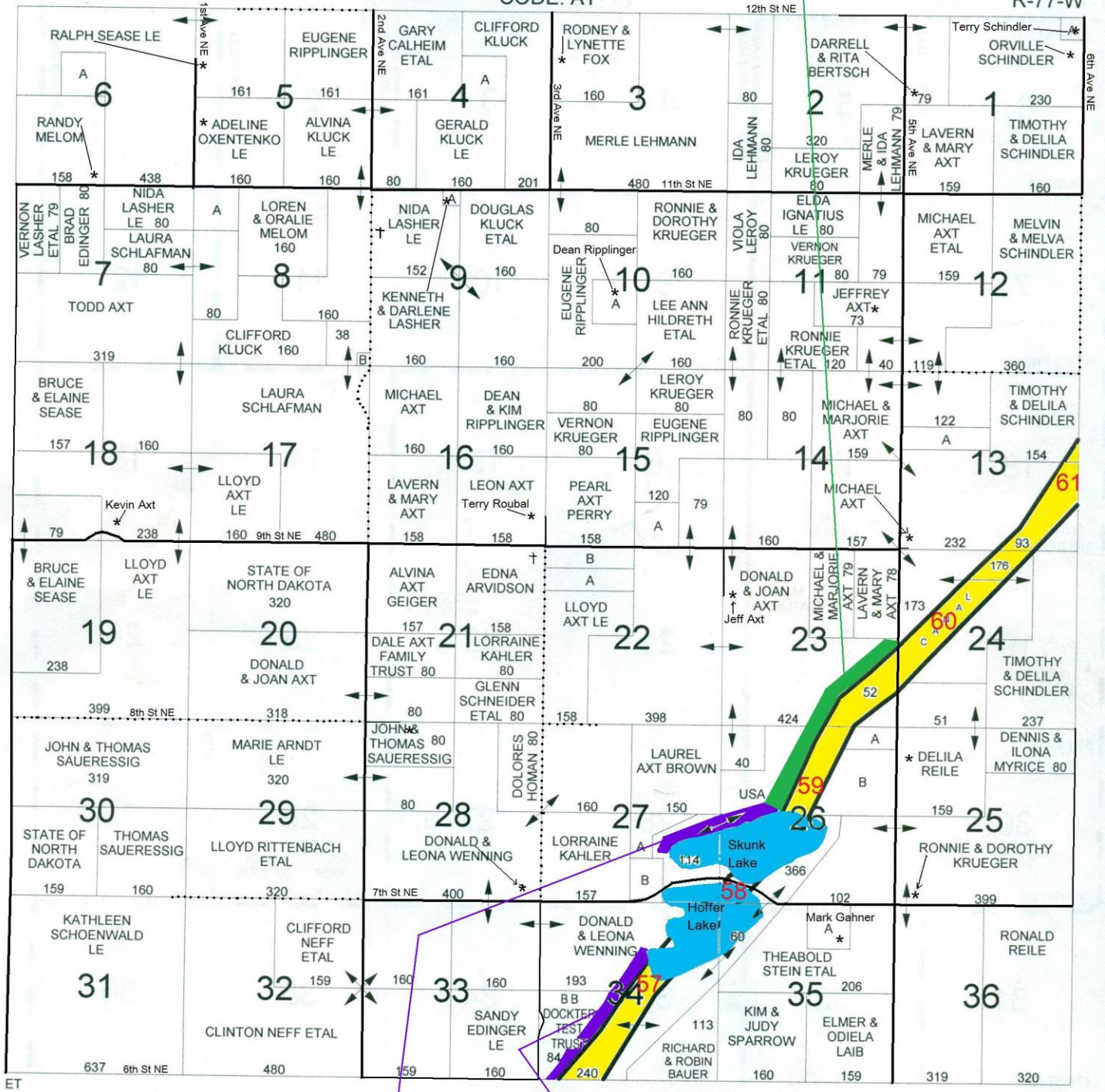
# MOUNTAIN CITY PLAT

MC 59L = 42.8 /A

T-147-N

CODE: AT

R-77-W



## SMALL TRACT OWNERS

- 1-A TERRY & DE ETTA SCHINDLER - 10 ACRES
- 4-A NIDA LASHER LE - 40 ACRES
- 6-A BRUCE & ELAINE SEASE - 40 ACRES
- 8-A KENNETH & DARLENE LASHER - 40 ACRES
- 8-B MELVIN & SHIRLEY SCHLAFMAN - 2 ACRES
- 9-A KENNETH & DARLENE LASHER - 7 ACRES
- 10-A DEAN & KIM RIPPLINGER - 40 ACRES
- 13-A ARLINGTON & PHYLLIS HELM - 37 ACRES
- 15-A ALVINA AXT GEIGER - 39 ACRES

- 22-A ALVIN & LEON AXT - 40 ACRES
- 22-B LEON AXT ETAL - 38 ACRES
- 26-A RONNIE & DOROTHY KRUEGER - 18 ACRES
- 26-B CLIFFORD NEFF ETAL - 110 ACRES
- 27-A UNITY INSURANCE AGENCY - 26 ACRES
- 27-B BRADLEY & PATRICK CROTTY - 29 ACRES
- 35-A MARK & CYNTHIA GAHNER - 53 ACRES

MC 58c L = 40 /A

MC 57L = 36.7 /A