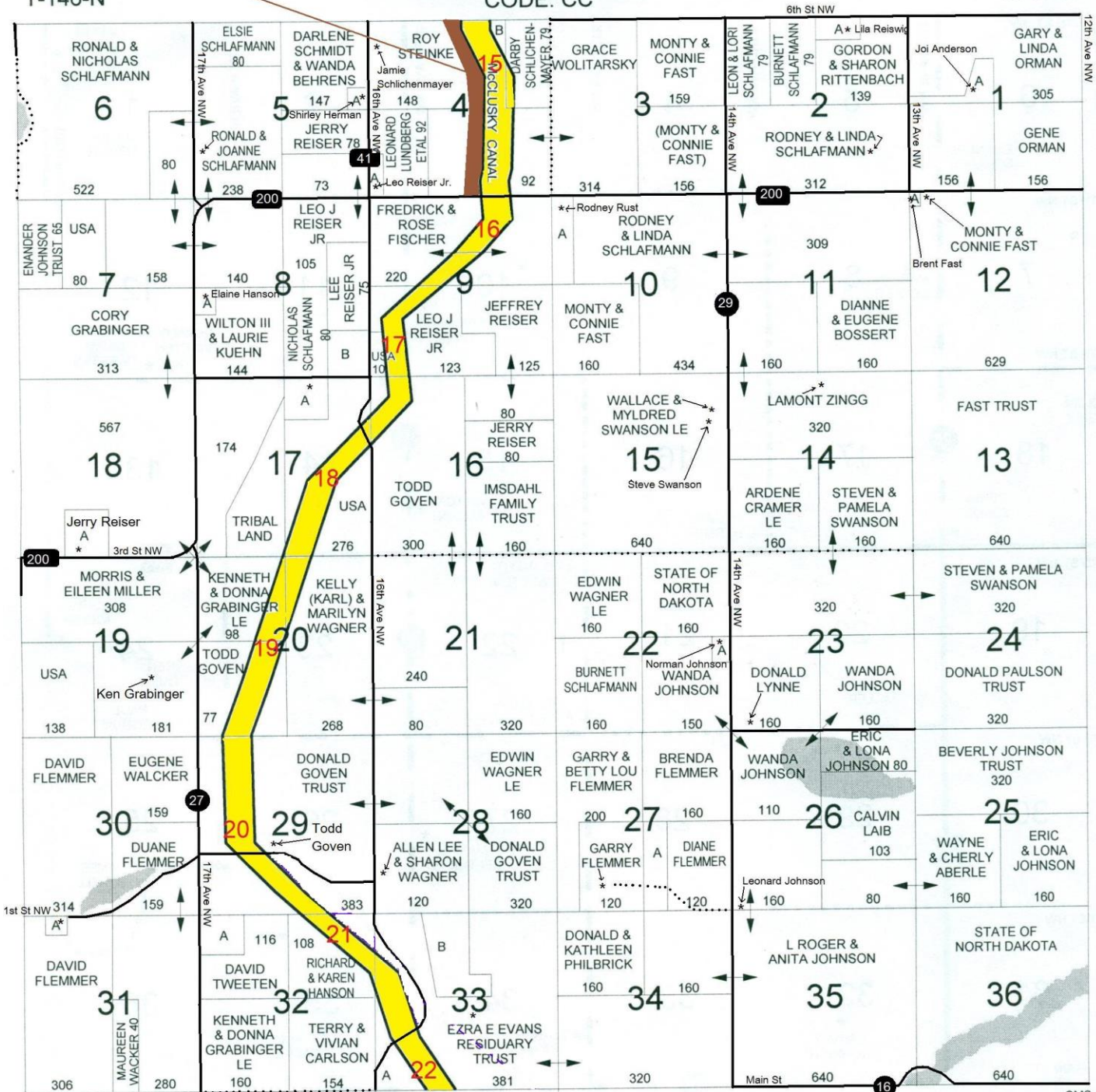


# MC 14R = 37.1 /A TWP 146N - R80W PLAT

T-146-N

CODE: CC

R-80-W



## SMALL TRACT OWNERS

- 1-A JOI & LEAH ANDERSON - 15 ACRES
- 2-A LILA REISWIG - 21 ACRES
- 4-A LEO J JR & LAVONNE REISER - 13 ACRES
- 4-B USA - 51 ACRES
- 5-A SHIRLEY HERMAN - 10 ACRES
- 8-A ELAINE HANSON - 12 ACRES
- 8-B LEO J REISER JR - 38 ACRES
- 10-A RODNEY RUST - 40 ACRES
- 12-A BRENT FAST - 2 ACRES
- 17-A LEO J REISER JR - 40 ACRES

- 18-A JERRY & DEBRA REISER - 39 ACRES
- 22-A NORMAN & RUTH JOHNSON - 10 ACRES
- 27-A BRENDA FLEMMER & BARBARA HALLMAN - 40 ACRES
- 31-A SAMMY FEARS - 8 ACRES
- 32-A BRIAN & TINA GOVEN - 44 ACRES
- 33-A RICHARD & SHARON PHILBRICK - 18 ACRES
- 33-B J W & C D JOCHIMS TRUST - 77 ACRES



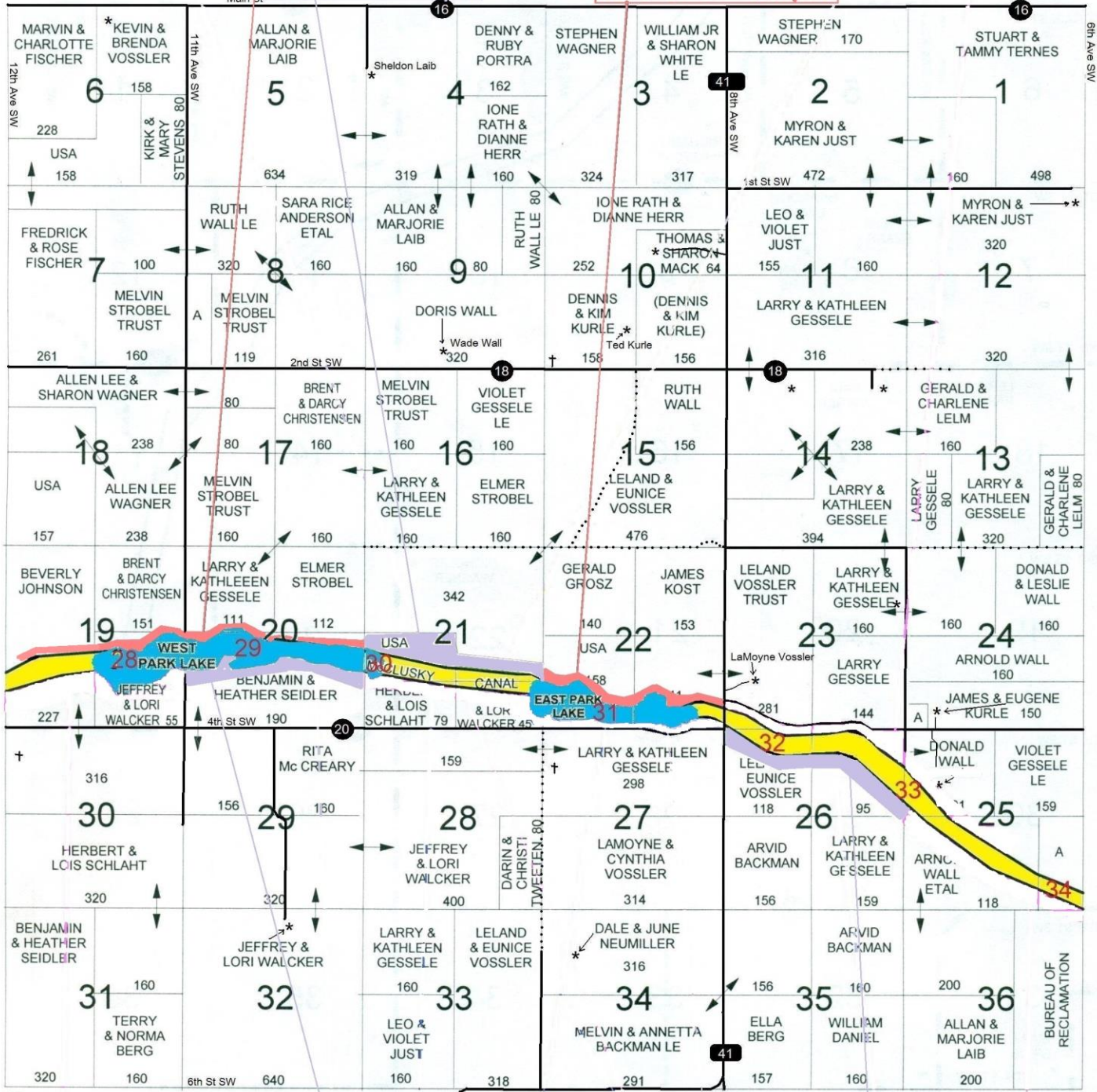
MC 29L = 50 /A TWP 145N - R79W PLAT

T-145-N

MC 30L = 55/A CODE: CJ

MC 31L = 69 /A

R-79-W



SMALL TRACT OWNERS

- 8-A THEODORE & DEBORHA ANDERSON - 41 ACRES
- 24-A JUANITA EHLERS - 10 ACRES
- 25-A LARRY & KATHLEEN GESSELE - 27 ACRES

MC 32R = 38 /A

MC 29R = 36 /A