

**GARRISON DIVERSION CONSERVANCY DISTRICT  
ENGINEERING AND OPERATIONS COMMITTEE**

**Garrison Diversion Conservancy District**

**January 9, 2025**

**9:00 AM**

**A G E N D A**

- 9:00 a.m. I. Pledge of Allegiance
- 9:01 a.m. II. Roll Call – Lisa Schafer
- 9:03 a.m. III. **Consideration of Minutes** – Mike Tweed
  - A. **>July 18, 2024**
- 9:04 a.m. IV. 2024 O&M Work Plan Review
  - A. McClusky Report – Darren Murray
    - 1. Slide Repair Update – Ryan Anderson
  - B. New Rockford Report – Darren Murray
  - C. Snake Creek Pumping Plant – Dustin Offerdahl
- 10:00 a.m. V. **>2025 OM&R Annual Work Plan & Budget** – Ryan Anderson
- 10:15 a.m. VI. **>2025 Devils Lake Outlet Work Plan** – Ryan Anderson
- 10:17 a.m. VII. **>2025 E&O Work Plan & Budget** – Kip Kovar
- 10:20 a.m. VIII. Snake Creek Pumping Plant Cofferdam Removal – Kip Kovar
- 10:25 a.m. IX. **>2025 Master Equipment List** – Kip Kovar
- 10:28 a.m. X. Other Business – Mike Tweed
- 10:30 a.m. XI. Adjourn

The following minutes are in draft form subject to review and approval by the Engineering & Operations Committee at its next meeting.

24-35

## **GARRISON DIVERSION CONSERVANCY DISTRICT**

### **ENGINEERING & OPERATIONS COMMITTEE**

**Garrison Diversion Conservancy District  
Carrington, North Dakota  
July 18, 2024**

A meeting of the Engineering & Operations Committee of the Garrison Diversion Conservancy District was held at the Garrison Diversion Conservancy District, Carrington, North Dakota, on July 18, 2024. The meeting was called to order by Chairman Tweed at 7:30 a.m.

#### **MEMBERS PRESENT**

Committee Chairman Mike Tweed  
Director Steve Forde (by video conference)  
Director Cliff Hanretty  
Director Jim Pellman  
Secretary Kip Kovar

#### **MEMBERS ABSENT**

Board Chairman Alan Walter  
Director Jeff LeDoux

#### **OTHERS PRESENT**

Staff members of the Garrison Diversion Conservancy District were present along with others. The registration sheet is attached to these minutes as Annex I.

The meeting was recorded to assist with compilation of the minutes.

#### **READING OF THE MINUTES**

**Motion by Director Hanretty to dispense with a reading of the January 18, 2024, Engineering & Operations Committee minutes and approve them as distributed. Second by Director Pellman. Upon voice vote, motion carried.**

#### **MCCLUSKY CANAL REFERENCE MAP**

Ryan Anderson, Engineer, Garrison Diversion, referred to the McClusky Canal map, stating this is provided as a reference for canal locations.

#### **2024 WORK PLAN UPDATE**

**McClusky/New Rockford Report** - - Darren Murray, Superintendent, Operations & Maintenance (O&M), Garrison Diversion, provided a review of the 2024 spring/summer work

activities performed by the O&M crew at the McClusky and New Rockford sites, which included photos. This included mowing, blading, graveling and slide repair at McClusky and mowing, road repair and a pump replacement at New Rockford. The O&M division also did culvert repair at Coal Mine Lake and provided assistance at Jamestown Dam cleaning out relief wells for the Bureau of Reclamation.

**Snake Creek Pumping Plant Report** - - Dustin Offerdahl, Plant Supervisor, Snake Creek Pumping Plant (SCPP), updated the committee, via PowerPoint, on the projects and activities at the SCPP, including sump clean up, sewer pit repairs, installation of plant security system, pumping operation updates, facility review and Northwest Area Water Supply (NAWS) construction.

### **MCCLUSY CANAL SLIDE REPAIR REPORT**

Mr. Anderson provided a PowerPoint presentation sharing photos of the slide repair work taking place along the McClusky Canal.

Mr. Anderson said work on the slide repair project has been slow this year due to wet conditions. Only about 3,500 loads or 50,000 cubic yards of fill have been hauled this year. Approximately 95% of the spoil has been moved.

Mr. Anderson said once the 4:1 slope is complete, there will be one drain to install.

Project expenses through May 2024 total \$9.7 million, which is 60% of the estimated \$17.5 million cost.

Remaining and ongoing work includes finalizing agreements with adjacent landowners who want wetlands dewatered, continuing to clean out the water prism portion of the canal, installing last drain and manholes, and riprapping and graveling after earthwork is completed.

Mr. Anderson stated the slide repair agreement with the Bureau of Reclamation expires October 30, 2025.

### **FIVE-YEAR OPERATION, MAINTENANCE & REPLACEMENT PLAN**

Mr. Anderson presented and reviewed the 2024-2028 Five-Year Operation, Maintenance & Replacement (OM&R) Plan dated July 11, 2024, which is submitted annually to the Bureau of Reclamation (Reclamation). This lays out the O&M job duties, along with milestones and completion dates. A copy of the OM&R Plan is attached to these minutes as Annex II.

Mr. Anderson added the 2024 OM&R budget is \$4,678,118.

Kip Kovar, District Engineer, Garrison Diversion, stated next year's outlook includes raising the Mile Marker 59 plug and determining what needs to be done with the McClusky Canal if it is to become operational for the Red River Valley Water Supply Project (RRVWSP).

**Motion by Director Hanretty to approve the 2024-2028 Five-Year Operation, Maintenance & Replacement Plan. Second by Director Forde. Upon roll call vote, the following directors voted aye: Forde, Hanretty, Pellman and Tweed. Those voting nay: none. Absent and not voting: LeDoux and Walter. Motion carried.**

**2024 EQUIPMENT LIST**

Mr. Kovar referred to the 2024 O&M Master Equipment List, which is provided for the committee's information.

Mr. Anderson reported new equipment for 2024 other than the vac truck includes a three quarter ton truck, two tandem axle dump trucks and a pickup.

**OTHER BUSINESS**

There being no further business to come before the committee, the meeting adjourned at 8:25 a.m.

(SEAL)

---

Mike Tweed, Chairman

---

Kip Kovar, Secretary

# REGISTRATION

Engineering and Operations Committee  
Garrison Diversion Conservancy District  
Carrington, North Dakota  
July 18, 2024

NAME	ADDRESS
Darren Murray	GD CD McClusky
Dustin offerdahl	GD CD - SCPP
Ryan Anderson	GD CD
Greg Bischoff	GD CD
Sey Paul Anderson	GD CD
Duane DeKruy	GD CD
Yara Schroyer	GD CD
Mike Weed	GD CD
Cory Hammett	GD CD
Jim Helmer	GD CD

**Garrison Diversion Unit  
Five-Year Operation,  
Maintenance &  
Replacement Plan  
2024-2028**

**July 11, 2024**

# ***Table of Contents***

Purpose and Objectives ..... 1

Background ..... 1

General Operation, Maintenance, and Replacement Criteria ..... 2

Status ..... 3

    McClusky ..... 3

    New Rockford ..... 3

    Snake Creek Pumping Plant ..... 3

Routine OM&R ..... 4

    Facility Maintenance ..... 4

    Water Operations ..... 5

    Other GDU Facilities ..... 6

Milestones and Completion Dates ..... 7

Past Expenditures ..... 8

Proposed Out Year Budgets ..... 8

2024 Budget ..... 9

202 through 2028 5-year Budget ..... 11

## **I. PURPOSE AND OBJECTIVES**

### **A. Purpose**

The purpose of this plan is to reaffirm objectives and maintenance criteria and to present work activities and estimated funding requirements to guide the Operation, Maintenance and Replacement (OM&R) Program of constructed Garrison Diversion Unit (GDU) facilities over the next five years under an Operation, Maintenance, and Replacement Contract between the Garrison Diversion Conservancy District (Garrison Diversion) and Bureau of Reclamation (Reclamation).

### **B. Objectives**

The objectives of the OM&R Program are: 1) to protect the federal investment, 2) to maintain public safety, 3) to provide long-term beneficial use and public benefits, 4) to protect water, land, wildlife, and cultural resources, and 5) to provide for future operations and management of project facilities as authorized by current legislation and within current environmental analyses.

## **II. BACKGROUND**

GDU Project facilities constructed to date include: Snake Creek Pumping Plant (SCPP), McClusky Canal, Lonetree Wildlife Management Area, New Rockford Canal, Jamestown Dam and Reservoir, Oakes Test Area (OTA) irrigation facilities (recently title transferred), Kraft Slough Wildlife Management Area, recreation facilities, radio towers, scattered tracts wildlife development areas, Audubon and Arrowwood National Wildlife Refuge (NWR) mitigation features, State and Tribal Municipal, Rural and Industrial (MR&I) water systems, and office and shop facilities at McClusky, New Rockford, Oakes, and Carrington.

In July 1991, Reclamation entered into Cooperative Agreement No. 1-FC-60-01790 with Garrison Diversion for OM&R of the McClusky Canal, New Rockford Canal, and OTA and to provide assistance as needed on other GDU facilities. OM&R of constructed GDU facilities continued under subsequent Cooperative Agreements Nos. R91AC60001 and R11AC60005. In June 2020, Reclamation entered into contract No. 20XX620109 an Operation, Maintenance and Replacement Contract of Certain Project Works with Garrison Diversion. This five-year plan covers work proposed to be completed by Garrison Diversion under contract. Reclamation provides Garrison Diversion with the funding, from annual GDU appropriations, necessary to perform the OM&R functions. Reclamation also cooperates with Garrison Diversion in providing technical assistance on OM&R activities and administrative assistance on NEPA/NHPA compliance requirements. The Dakota Water Resources Act of 2000 (DWRA), the current legislative authority for GDU, states in part in Section 1 (g) "The Secretary shall enter into one or more



agreements with the State of North Dakota to carry out this Act, including operation and maintenance of the completed unit facilities....”.

### III. GENERAL OPERATION, MAINTENANCE AND REPLACEMENT CRITERIA

- Routine OM&R of the McClusky Canal, New Rockford Canal, and Snake Creek Pumping Plant, as covered in the OM&R contract is to continue with particular focus on:
  - Protecting the federal investment
  - Maintaining a competent, well-trained OM&R work force
- Clear instances of public safety are to be given priority (i.e. structural integrity of bridges).
- Safe access is to be maintained along at least one side of the canals.
- Protection of private and public lands outside project ROWs from activities associated with OM&R of project facilities is to be given priority.
- The canal prism should be maintained to protect O&M roads, lands outside the canal ROWs, and to protect canal lining on watered canal reaches.
- At New Rockford, minimum maintenance will be provided to protect the federal investment and public safety.
- Slides on the McClusky Canal should be repaired to the extent needed to meet existing water demands. Repair measures are to be developed on a case-by-case basis.
- Measures to prevent slope failures are to proceed (i.e. V ditch drain conversions, berm drain modifications, and interceptor drains).
- Focus on efficient and economical methods to minimize costs, including contracting.
- Provide assistance with maintenance of other constructed GDU facilities as requested by Reclamation.

In 2020 Garrison Diversion entered into Contract No. 20XX620109 with Reclamation. This contract assigned responsibility for the OM&R of transferred works to Garrison Diversion. The transferred works include Snake Creek Pumping Plant (SCPP), McClusky Canal O&M (MM 0-59), McClusky Canal ROW (MM 0-59), and Carrington Headquarters. Reclamation retains the OM&R responsibilities for other project works. Garrison Diversion will complete the agreed upon routine and extraordinary work at the other project works. Other Project works include McClusky Canal O&M (MM 59-74), McClusky Canal ROW (MM59-74), McClusky Canal Recreation, New Rockford Canal & Radio Towers, Arrowwood National Wildlife Refuge, Audubon National Wildlife Refuge, Lonetree Wildlife Management Area, Scattered Tracts, Jamestown Dam, and State and Tribal MR&I.

## **IV. STATUS**

### **A. McClusky**

Primary construction of the McClusky Canal covered the period beginning in the early 1970s through 1980. Overall, the McClusky Canal is in acceptable condition, except for the major slide area between mile marker (MM) 20-21.5. On average, the McClusky Canal currently delivers approximately 15,000 acre-feet of water a year for uses such as irrigation, fish and wildlife mitigation and enhancement, livestock watering, recreation, water quality maintenance, and in-stream flow needs. The canal is used from MM 1 to MM 59. From MM 59 to the end, at MM 74, the canal is dewatered. Interest in contracting for irrigation water from the McClusky Canal has been increasing in recent years.

Two major areas which will need to be addressed to ensure delivery of a firm water supply which are not included in this plan are: 1) repairs to the major slide area between MM 20-21.5 (handled under a separate cooperative agreement) and 2) modification to the MM 59 Plug.

### **B. New Rockford**

Construction of the New Rockford Canal covered the period beginning in 1983 through 1991. Overall, the New Rockford Canal is in acceptable condition. The canal does not deliver water for any use and is not in operation. Natural runoff, which accumulates in the canal, is outlet to the James River.

Significant items which need to be addressed on the canal for the future are dealing with the effects the canal has on cross drainage along its 42-mile length and how best to manage and maintain the canal given its unknown future.

### **C. Snake Creek Pumping Plant**

Construction of the Snake Creek Pumping Plant (SCPP) covered the period beginning in 1970 through 1974. The SCPP consists of a reinforced concrete structure, three vertical shaft pumping units, and three 11-foot discharge pipes. The three pumps each have a high-head and low-head bowls to cover the required pumping head range. Each pump is powered by an 8,000-horsepower synchronous motor with power provided from the Garrison power plant. Total capacity of the three pumps is 2,050 cubic feet per second.

The SCPP pumps water from Lake Sakakawea to Lake Audubon to maintain a summer target elevation of 1847 feet. Overall, the SCPP is in acceptable condition. Construction activities associated with converting one of the pumps and a discharge pipe of the SCPP to an intake for the Northwest Area Water Supply began in 2023 and is ongoing.

## **V. ROUTINE OM&R, 2023-2027**

Routine OM&R of the McClusky Canal, New Rockford Canal, and Snake Creek Pumping Plant is to continue. Routine OM&R activities include facility maintenance, water operations, and maintenance at other GDU Facilities.

### **A. Facility Maintenance**

Activities performed under facility maintenance include; building and yard maintenance, facility surveillance, vegetation control, fence maintenance, O&M road maintenance, structure maintenance, slope stabilization and drain maintenance.

Garrison Diversion personnel will perform all maintenance of buildings and yards and provide janitorial services for all office, shop, and storage facilities at SCPP, McClusky, New Rockford, and restrooms at the Chain-of-Lakes area.

Portions of canals and other facilities are monitored for slides, erosion, drainage and other problems on at least a weekly basis. Some activities, such as reading wells and monitoring water elevations and flows, have specific schedules to follow to ensure that all drainage facilities are operating correctly and desirable water levels in the canals are maintained within reason.

Vegetation management along the canals includes several control methods such as aerial and ground spraying, mowing, grazing, burning, or other biological non-chemical control methods. An annual "Vegetation Management Report" is prepared by Garrison Diversion and submitted to Reclamation to report on past and future activities.

Activities along the canal such as repairing fence, cleaning or removing cattle guards, and other general right-of-way related maintenance are performed as needed.

Blading, vegetation control on roads, graveling when needed, filling holes, clearing material deposited from small landslides, and other miscellaneous maintenance items are performed as needed on the McClusky Canal O&M roadways. County roads will be mowed in accordance with county regulations. The New Rockford Canal O&M roadways will be maintained with chemical and mowing methods, with blading only as necessary.

Maintenance on all structures will be performed as required so that structures are unobstructed and in an operable condition, a master schedule detailing all structures and a schedule for inspecting each type of structure

will be maintained. A schedule will be maintained for recoating structures and equipment to improve the life, safety, operating efficiency, and appearance of the structures and equipment.

Reclamation will conduct certified bridge inspections biennially on all Type I bridges, as specified in Reclamation's master bridge inspection schedule. Garrison Diversion will inspect the abutments on all bridges across the McClusky Canal and New Rockford Canal. Garrison Diversion will also inspect annually the bridges on the McClusky Canal in Sheridan County, for which Reclamation holds the title.

Stabilizing the cut slopes on the McClusky Canal where slope failures have occurred and replacing beach belting where existing material has been eroded are continuing efforts. Repairing slope failures and implementing measures to prevent future failures are to be evaluated with Reclamation.

Obtaining field stone to be used for rip rap throughout the canal for slope stabilization and erosion protection is an ongoing work activity. Garrison Diversion acquires the field stone from landowners with field rock piles near project facilities and then stockpiles the rock on the canal ROW. The rock is screened to separate the soil and sort by size. The soil removed during the process is used as top soil on other projects for reseeding.

Cleaning, removal, and replacement of buried pipe drains in McClusky and New Rockford will be completed in accordance with a master schedule. The schedule also includes jetting Jamestown Dam relief wells and toe drains. All pipe drains will be maintained in an operational basis and inspected regularly. All drains will be cleaned, as needed, to ensure flows are not obstructed.

For areas open to the public, maintain lands and facilities necessary to provide minimum basic facilities to meet public health and safety standards, primarily in the Chain-of-Lakes Area, which is part of the McClusky Canal system. This includes routine maintenance of restroom facilities, boat docks, boat ramps, parking areas, camp sites, fire rings, signs, and garbage pickup. It also includes spraying noxious weeds and managing the vegetation, mowing parking areas and fire breaks. Standard operating procedures (SOP) have been developed for describing the facilities, O&M activities, schedules, and procedures. The SOP is reviewed annually and updated as necessary by Reclamation and Garrison Diversion.

## **B. Water Operations**

Garrison Diversion will cooperate with Reclamation in the management and delivery of project water to various water users for various purposes,

including but not limited to the Fish and Wildlife Service, North Dakota Game and Fish Department, park boards, irrigators, landowners and ranchers, for wildlife enhancement, recreation, in-stream flow maintenance, livestock watering, water quality improvement, irrigation, and freshening of the canal and lakes. Monitoring and recording of water supplies, flows, elevations, deliveries, water quality, and other pertinent water operations information is accomplished periodically at numerous sites by the O&M staff at McClusky. All new requests for water are directed to Reclamation. Reclamation will issue and administer all water service contracts.

Garrison Diversion will operate SSCP as specified the *LOU for interim Operations of Audubon Lake* and *COE's Snake Creek Dam and Lake Audubon Reservoir Water Control Manual*. Annual water reports will be submitted to Reclamation.

Water operations on the New Rockford Canal involve maintaining the canal in a dewatered condition as much as practical.

### **C. Other GDU Facilities**

Garrison Diversion is to provide assistance on maintenance of other GDU facilities as requested by Reclamation as part of the OM&R program under this cooperative agreement. Work by Garrison Diversion on other GDU facilities is coordinated through Reclamation. This work is typically smaller projects and requires equipment and personnel expertise available from Garrison Diversion. Working in this manner makes the most efficient and cost-effective use of equipment and funds provided by Reclamation. Other GDU facilities which Garrison Diversion provides assistance on include:

- Lonetree Wildlife Management Area
- Jamestown Dam and Reservoir
- Audubon and Arrowwood NWR mitigation features
- Scattered Tracts Wildlife Development Areas
- Tribal Municipal, Rural & Industrial Water Systems

**VI. MILESTONES AND COMPLETION DATES**

<b>Tasks</b>	<b>Milestones</b>	<b>Completion Date</b>
1	Annual jetting of Jamestown relief wells	April 15
2	Complete 1 <sup>st</sup> quarter water operations report	April 30
3	Complete maintenance and repairs on equipment, pumping plants and distribution systems in preparation for yearly water distribution	May 1
4	Clean and prepare Chain of Lakes facilities for public use	May 20
5	Reach Lake Audubon summer target elevation	May 25
6	Water up pipe laterals and pumping plants for irrigation season	June 10
7	Complete hay auction	June 15
8	Inspect and maintain Chain of Lakes facilities for public use	June 30
9	Complete spring blading of O&M roads	June 30
10	Sweep bridge decks	June 30
11	Complete 2 <sup>nd</sup> quarter water samples along the McClusky Canal	June 30
12	Complete water deliveries to FWS WDA's	June 30
13	Complete summer mowing of county and township road ditches	July 15
14	Complete 2 <sup>nd</sup> quarter water operations report	July 30
15	Complete fall blading of O&M roads	Sept 1
16	Inspect and maintain Chain of Lakes facilities for public use	Sept 20
17	Complete annual noxious weed spraying	Sept 30
18	Annual inspection of bridge abutments	Sept 30
19	Conduct joint annual inspection of New Rockford and McClusky Canals	Sept 30
20	Complete 3 <sup>rd</sup> quarter water samples along the McClusky Canal	Sept 30
21	Complete fall mowing of county and township road ditches	Oct 1
22	Complete 3 <sup>rd</sup> quarter water operations report	Oct 30
23	Dewater and winterize pipe laterals and pumping plants	Nov 15
24	Reach Lake Audubon winter target elevation	Nov 15
25	Complete annual vegetation management report	Dec 31
26	Complete 4 <sup>th</sup> quarter water operations report	Jan 31

**VII. PAST EXPENDITURES**

Past expenditures for the OM&R program are shown in the following table.

<b>Garrison Diversion Conservancy District OM&amp;R 2021 - 2023</b>			
<b>O&amp;M Expenses</b>	<b>2021 Actuals</b>	<b>2022 Actuals</b>	<b>2023 Actuals</b>
Salaries and Wages	\$ 1,157,604	\$ 1,034,123	\$ 1,203,743
Fringe Benefits	\$ 620,563	\$ 508,648	\$ 588,498
Travel	\$ 7,104	\$ 5,901	\$ 27,825
Training	\$ 748	\$ -	\$ 3,239
Equipment	\$ 462,701	\$ 545,468	\$ 736,864
Supplies/Materials	\$ 253,756	\$ 203,541	\$ 416,245
Contractual	\$ 738,563	\$ 245,645	\$ 129,713
Other	\$ 174,124	\$ 115,306	\$ 138,235
Indirect Costs	\$ 550,318	\$ 559,948	\$ 518,271
<b>Total Expenses</b>	<b>\$ 3,965,481</b>	<b>\$ 3,258,580</b>	<b>\$ 3,762,635</b>

**VIII. PROPOSED OUT YEAR BUDGETS**

The proposed budget that reflects the funding needs for the OM&R program from 2024 to 2028 is shown in the following table.

<b>Garrison Diversion Conservancy District OM&amp;R 2024 - 2028</b>					
<b>O&amp;M Expenses</b>	<b>2024 Budget</b>	<b>2025 Budget</b>	<b>2026 Budget</b>	<b>2027 Budget</b>	<b>2028 Budget</b>
Salaries and Wages	\$ 1,188,200	\$ 1,211,964	\$ 1,574,978	\$ 1,606,477	\$ 1,638,607
Fringe Benefits	\$ 580,400	\$ 592,008	\$ 830,805	\$ 847,421	\$ 864,370
Travel	\$ 11,100	\$ 11,322	\$ 11,548	\$ 11,779	\$ 12,015
Training	\$ 2,700	\$ 2,754	\$ 2,809	\$ 2,865	\$ 2,923
Equipment	\$ 1,323,000	\$ 733,140	\$ 747,803	\$ 762,759	\$ 778,014
Supplies/Materials	\$ 451,000	\$ 460,020	\$ 469,220	\$ 478,605	\$ 488,177
Contractual	\$ 279,500	\$ 106,152	\$ 108,275	\$ 110,441	\$ 112,650
Other	\$ 143,800	\$ 171,676	\$ 149,610	\$ 177,602	\$ 155,654
Indirect Costs	\$ 698,418	\$ 679,156	\$ 821,866	\$ 838,422	\$ 855,310
<b>Total Expenses</b>	<b>\$ 4,678,118</b>	<b>\$ 3,968,192</b>	<b>\$ 4,716,914</b>	<b>\$ 4,836,371</b>	<b>\$ 4,907,718</b>

**OMR Contract # 20XX620109**  
**Budget FY 2024**

<b>BUDGET ITEM DESCRIPTION</b>	<b>Transferred Works Jan 1 to Dec 31, 2024</b>	<b>Other Project Works Jan 1 to Dec 31, 2024</b>	<b>Total Budget Jan 1 to Dec 31, 2024</b>
<b>SALARIES AND WAGES</b>			
O&M Wages	\$760,500.00	\$281,300.00	\$1,041,800.00
Management Salaries	\$106,872.00	\$39,528.00	\$146,400.00
<b>Total Wages</b>	<b>\$867,372.00</b>	<b>\$320,828.00</b>	<b>\$1,188,200.00</b>
<b>FRINGE BENEFITS</b>			
O&M Benefits	\$378,067.00	\$139,833.00	\$517,900.00
Management Benefits	\$45,625.00	\$16,875.00	\$62,500.00
<b>Total Benefits</b>	<b>\$423,692.00</b>	<b>\$156,708.00</b>	<b>\$580,400.00</b>
<b>TRAVEL</b>			
Travel	\$1,221.00	\$9,879.00	\$11,100.00
<b>TRAINING</b>			
Training	\$1,161.00	\$1,539.00	\$2,700.00
<b>EQUIPMENT</b>			
Equipment Maintenance	\$297,000.00	\$3,000.00	\$300,000.00
Equipment Lease	\$7,000.00	\$0.00	\$7,000.00
Equipment Purchase	\$436,880.00	\$579,120.00	\$1,016,000.00
<b>Total Equipment</b>	<b>\$740,880.00</b>	<b>\$582,120.00</b>	<b>\$1,323,000.00</b>
<b>SUPPLIES/MATERIALS</b>			
Supplies	\$111,280.00	\$102,720.00	\$214,000.00
Materials	\$207,000.00	\$30,000.00	\$237,000.00
<b>Total Supplies &amp; Materials</b>	<b>\$318,280.00</b>	<b>\$132,720.00</b>	<b>\$451,000.00</b>
<b>CONTRACTUAL SERVICES</b>			
Engineering	\$125,700.00	\$53,800.00	\$179,500.00
Professional Services	\$100,000.00	\$0.00	\$100,000.00
<b>Total Contractual Services</b>	<b>\$225,700.00</b>	<b>\$53,800.00</b>	<b>\$279,500.00</b>
<b>OTHER</b>			
Utilities	\$25,865.00	\$48,035.00	\$73,900.00
Safety	\$31,720.00	\$21,280.00	\$53,000.00
Miscellaneous	\$4,394.00	\$12,506.00	\$16,900.00
<b>Total Other</b>	<b>\$61,979.00</b>	<b>\$81,821.00</b>	<b>\$143,800.00</b>
<b>TOTAL DIRECT COSTS</b>	<b>\$2,640,285.00</b>	<b>\$1,339,415.00</b>	<b>\$3,979,700.00</b>
<b>INDIRECT COSTS</b>			
<b>TOTAL INDIRECT COSTS-Rate 23.88%</b>	<b>\$518,053.91</b>	<b>\$180,364.45</b>	<b>\$698,418.36</b>
<b>TOTAL PROJECT COSTS</b>	<b>\$3,158,338.91</b>	<b>\$1,519,779.45</b>	<b>\$4,678,118.36</b>



\*Transferred works include:

Snake Creek Pumping Plant  
McClusky Canal O&M (MM 0-59)  
McClusky Canal ROW (MM 0-59)  
Carrington HQ non-routine costs

\*\*Other Project works include:

McClusky Canal O&M (MM 59-74)  
McClusky Canal ROW (MM 59-74)  
McClusky Canal Recreation  
New Rockford Canal & Radio Towers  
Arrowwood National Wildlife Refuge  
Audubon National Wildlife Refuge  
Lonetree  
Scattered Tracts  
Jamestown Dam  
Tribal MR&I

**OMR Contract # 20XX620109**  
**2024 - 2028 5-year Budgets**

<b>BUDGET ITEM DESCRIPTION</b>	<b>2024 Budget</b>	<b>2025 Budget</b>	<b>2026 Budget</b>	<b>2027 Budget</b>	<b>2028 Budget</b>
<b>SALARIES AND WAGES</b>					
O&M Wages	\$1,041,800.00	\$1,062,636.00	\$1,422,662.98	\$1,451,116.24	\$1,480,138.57
Management Salaries	\$146,400.00	\$149,328.00	\$152,314.56	\$155,360.85	\$158,468.07
<b>Total Wages</b>	<b>\$1,188,200.00</b>	<b>\$1,211,964.00</b>	<b>\$1,574,977.54</b>	<b>\$1,606,477.10</b>	<b>\$1,638,606.64</b>
<b>FRINGE BENEFITS</b>					
O&M Benefits	\$517,900.00	\$528,258.00	\$765,780.13	\$781,095.73	\$796,717.64
Management Benefits	\$62,500.00	\$63,750.00	\$65,025.00	\$66,325.50	\$67,652.01
<b>Total Benefits</b>	<b>\$580,400.00</b>	<b>\$592,008.00</b>	<b>\$830,805.13</b>	<b>\$847,421.23</b>	<b>\$864,369.65</b>
<b>TRAVEL</b>					
Travel	\$11,100.00	\$11,322.00	\$11,548.44	\$11,779.41	\$12,015.00
<b>TRAINING</b>					
Training	\$2,700.00	\$2,754.00	\$2,809.08	\$2,865.26	\$2,922.57
<b>EQUIPMENT</b>					
Equipment Maintenance	\$300,000.00	\$306,000.00	\$312,120.00	\$318,362.40	\$324,729.65
Equipment Lease	\$7,000.00	\$7,140.00	\$7,282.80	\$7,428.46	\$7,577.03
Equipment Purchase	\$1,016,000.00	\$420,000.00	\$428,400.00	\$436,968.00	\$445,707.36
<b>Total Equipment</b>	<b>\$1,323,000.00</b>	<b>\$733,140.00</b>	<b>\$747,802.80</b>	<b>\$762,758.86</b>	<b>\$778,014.03</b>
<b>SUPPLIES/MATERIALS</b>					
Supplies	\$214,000.00	\$218,280.00	\$222,645.60	\$227,098.51	\$231,640.48
Materials	\$237,000.00	\$241,740.00	\$246,574.80	\$251,506.30	\$256,536.42
<b>Total Supplies &amp; Materials</b>	<b>\$451,000.00</b>	<b>\$460,020.00</b>	<b>\$469,220.40</b>	<b>\$478,604.81</b>	<b>\$488,176.90</b>
<b>CONTRACTUAL SERVICES</b>					
Engineering	\$179,500.00	\$86,152.26	\$87,875.31	\$89,632.81	\$91,425.47
Professional Services	\$100,000.00	\$20,000.00	\$20,400.00	\$20,808.00	\$21,224.16
<b>Total Contractual Services</b>	<b>\$279,500.00</b>	<b>\$106,152.26</b>	<b>\$108,275.31</b>	<b>\$110,440.81</b>	<b>\$112,649.63</b>
<b>OTHER</b>					
Utilities	\$73,900.00	\$75,378.00	\$76,885.56	\$78,423.27	\$79,991.74
Safety	\$53,000.00	\$79,060.00	\$55,141.20	\$81,244.02	\$57,368.90
Miscellaneous	\$16,900.00	\$17,238.00	\$17,582.76	\$17,934.42	\$18,293.10
<b>Total Other</b>	<b>\$143,800.00</b>	<b>\$171,676.00</b>	<b>\$149,609.52</b>	<b>\$177,601.71</b>	<b>\$155,653.74</b>
<b>TOTAL DIRECT COSTS</b>	<b>\$3,979,700.00</b>	<b>\$3,289,036.26</b>	<b>\$3,895,048.21</b>	<b>\$3,997,949.18</b>	<b>\$4,052,408.16</b>
<b>INDIRECT COSTS</b>					
<b>TOTAL INDIRECT COSTS-Rate 23.88%</b>	<b>\$698,418.36</b>	<b>\$679,155.86</b>	<b>\$821,865.59</b>	<b>\$838,422.31</b>	<b>\$855,310.15</b>
<b>TOTAL PROJECT COSTS</b>	<b>\$4,678,118.36</b>	<b>\$3,968,192.12</b>	<b>\$4,716,913.81</b>	<b>\$4,836,371.48</b>	<b>\$4,907,718.31</b>

**GARRISON DIVERSION  
CONSERVANCY DISTRICT**

**2025 OPERATION, MAINTENANCE,  
and REPLACEMENT WORKPLAN  
FOR TRANSFERRED WORKS**

December 20, 2024

**TABLE OF CONTENTS**

**INTRODUCTION**..... 1

    Purpose ..... 1

    Organization ..... 1

    Operational Plan and Work Schedule..... 1

    Safety Program..... 2

        General..... 2

        Job Safety Analysis..... 2

        Training and Certification ..... 3

    Budget and Funding ..... 3

**ROUTINE AND SPECIFIC WORK ITEMS**..... 4

    General..... 4

    Routine O&M Work at SSCP and McClusky (MM 0-59) ..... 4

        Facility Maintenance ..... 4

        Water Operations..... 5

    Specific Work Items to be Performed ..... 6

        McClusky Canal (MM0-59) ..... 6

        Snake Creek Pumping Plant..... 7

    Milestone and Completion Dates ..... 9

**LIST OF APPENDICES**

Appendix A (O&M Organizational Chart)..... 10

Appendix B (Safety Program Summary/Training)..... 11

Appendix C (OM&R Workplan for Other Project Facilities) ..... 12

Appendix D (2025 Budget Estimate) ..... 20

## I. INTRODUCTION

### A. PURPOSE

This document presents the Garrison Diversion Conservancy District's Annual Operation, Maintenance, and Replacement (OM&R) Workplan as required by the OM&R Transfer Contract 20XX620109. It details work schedules and procedures to ensure that all work performed by the Garrison Diversion O&M personnel will meet high quality standards.

### B. ORGANIZATION

The Operation and Maintenance Division is an integrated portion of Garrison Diversion. The overall responsibility for the work performed by the O&M staff rests with Alan Walter, Chairman of the Board of Directors. The general operation is the responsibility of the General Manager, Duane DeKrey. The District Engineer, Kip Kovar, is responsible for the general O&M activity as needed. The General Manager is supplied with summaries of the work accomplished and other pertinent information and periodically provides input on various issues, including safety.

An O&M organizational chart is attached as Appendix A.

There is frequent communication between Darren Murray, O&M Superintendent, located in McClusky with the New Rockford office and Snake Creek Pumping Plant. These personnel work closely with the District Engineer and Staff Engineer in developing the workplan and in the overall coordination of work activities, especially safety and unforeseen or unscheduled activities. All of the O&M staff are encouraged to work closely with and input ideas to their supervisors to ensure that a cooperative and coordinated effort is being made to perform all required work efficiently, effectively and safely. A continual and genuine effort is being made to provide training in all aspects of the work effort and to utilize proper equipment and procedures to develop and implement an efficient and safe O&M program.

### C. OPERATIONAL PLAN AND WORK SCHEDULE

Garrison Diversion will annually submit a detailed OM&R Workplan for Reclamation's approval. The workplan will include items to be completed for the Transferred Works and attached in Appendix C will be the workplan submitted by Reclamation for Other Project Works. However, it should be pointed out that this is a dynamic document that may change, depending on actual conditions encountered. All significant changes and activities will be closely coordinated with Reclamation. Before any major unscheduled work item is undertaken, specific plans, specifications and schedules will be submitted to Reclamation for concurrence and comments. Routine work will be performed in accordance with this annual workplan and transfer contract.

Bi-weekly accomplishment reports and schedules will be submitted to Reclamation.

**Note:** Transferred Works include Snake Creek Pumping Plant (SCPP), McClusky Canal O&M (MM 0-59), McClusky Canal ROW (MM 0-59), and Carrington Headquarters. Other Project works include McClusky Canal O&M (MM 59-74), McClusky Canal ROW (MM59-74), McClusky Canal Recreation, New Rockford Canal & Radio Towers, Arrowwood National Wildlife Refuge, Audubon National Wildlife Refuge, Lonetree Wildlife Management Area, Scattered Tracts, Jamestown Dam, and State and Tribal MR&I.

## **D. SAFETY PROGRAM**

### **a. General**

Garrison Diversion strives to develop and implement a comprehensive safety program. The Garrison Diversion Conservancy District “Safety and Health Program Manual” (Safety Manual) and “North Dakota Workers Compensation Bureau Risk Management Program” summarize many aspects of the safety program. Garrison Diversion has qualified over the past several years and is presently operating with a five percent discount granted by the North Dakota Workers Compensation Bureau.

All O&M employees have received a copy of the May 9, 2007, Safety Manual and are provided time and training to become familiar with its contents. Supervisors and employees are responsible for ensuring that safety is the number one priority. Personnel are receiving primary and advanced safety training as outlined in Appendix B. All operations will be performed in a safe manner, and safety violations will be documented and handled according to policies and procedures outlined in the Safety Manual. Judy Allmaras coordinates Garrison Diversion’s overall safety program with as much of it as practical being delegated to the O&M and Carrington offices.

District employees will be guided by the following fundamental principles:

- Let no person think for even an instant that it is acceptable to set aside safe work procedures for personal convenience or to expedite a job.
- Let every person know that it is his/her responsibility to look for and eliminate hazardous working procedures or equipment.
- Let every supervisor and manager know that he/she is to be a model of a positive safety attitude at all times.

### **b. Job Safety Analysis**

One of the best accident-prevention tools supervisors possess is the Job Safety Analysis (JSA). A JSA is a breakdown of the steps needed to safely accomplish a job, with each step being analyzed for associated hazards. Once hazards are identified, solutions can be developed to eliminate them and guard against potential accidents. JSAs are critical to the safety program and will be

developed and/or reviewed for each operation prior to initiating any work tasks. All employees involved in the work will participate in preparing the JSA. All JSAs developed previously will be reviewed and updated prior to performing a job. JSAs will be kept on file in each field office.

**c. Training and Certification**

Before employees are permitted to operate any equipment, they will be properly trained and certified to operate each piece required of them. Certification will be by Garrison Diversion personnel or other appropriate sources. No one will be permitted to operate any piece of equipment if not certified to do so. Records of operator certification will be kept on task training forms and maintained at the O&M offices.

Brake testing of equipment and heavy vehicles will be performed annually and vehicles certified to assure they are in safe operating condition from this viewpoint.

Bi-weekly reports will be provided to Reclamation, which includes work accomplished during the reporting period and scheduled work for the following period. Significant issues such as training, inspections, operator certification, brake testing and other issues will also be included.

Emergency action plans will be followed, as needed, as outlined in Section XVII of Garrison Diversion's Safety and Health Manual.

**E. BUDGET AND FUNDING**

The budget has been prepared for January 1 through December 31, 2025, in conformance with the workplan and is shown in detail in Appendix D.

## II. ROUTINE AND SPECIFIC WORK ITEMS

### A. GENERAL

The workplan is divided into two parts, routine and specific work activities. Section B below discusses the routine O&M work to be performed at each area. **This work is all considered high priority.**

Specific work activities, which have been identified during various field reviews, are listed in section C under their respective location subheadings. **The priorities for these specific work activities are shown by each individual item.** The specific work activities are a comprehensive list for tracking purposes. Completion of these activities may not occur within the timeframe noted in this workplan. Any incomplete specific work activities will be reviewed with Reclamation annually and carried over into subsequent workplans.

All gravel, rock and soil materials will come from archeologically approved sources.

### B. ROUTINE OM&R WORK for TRANSFERRED WORKS

#### a. Facility Maintenance

Activities performed under facility maintenance include: building and yard maintenance, facility surveillance, vegetation control, fence maintenance, O&M road maintenance, structure maintenance, slope stabilization and drain maintenance.

Garrison Diversion personnel will perform all maintenance of buildings and yards and provide janitorial services for all office, shop, and storage facilities at S CPP, McClusky Canal, and Carrington Headquarters.

Portions of the canal and other facilities are monitored for slides, erosion, drainage and other problems on at least a weekly basis. Some activities, such as reading wells and monitoring water elevations and flows, have specific schedules to follow to ensure that all drainage facilities are operating correctly and desirable water levels in the canals are maintained within reason.

Vegetation management along the canal includes several control methods such as aerial and ground spraying, mowing, grazing, burning, or other biological non-chemical control methods. An annual "Vegetation Management Report" is prepared by Garrison Diversion and submitted to Reclamation to report on past and future activities.

Activities along the canal such as repairing fence, cleaning or removing cattle guards, and other general right-of-way related maintenance are performed as needed.



Blading, vegetation control on roads, graveling when needed, filling holes, clearing material deposited from small landslides, and other miscellaneous maintenance items are performed as needed on the McClusky Canal (MM 0-59) O&M roadways. County roads will be mowed in accordance with county regulations.

Maintenance on all structures will be performed as required so that structures are unobstructed and in an operable condition, a master schedule detailing all structures and a schedule for inspecting each type of structure will be maintained. A schedule will be maintained for recoating structures and equipment to improve the life, safety, operating efficiency, and appearance of the structures and equipment. Inaccessible features (headworks, check structures, ND Highway 200 tunnel, and cross drains) were examined in 2022. Recommended to re-inspect the facilities by 2032.

Reclamation will conduct certified bridge inspections biennially on all Type I bridges, as specified in Reclamation's master bridge inspection schedule. Garrison Diversion will inspect the abutments on all bridges across the McClusky Canal (MM 0-59). Garrison Diversion will also annually inspect and clean the bridges on the McClusky Canal (MM 0-59) in Sheridan County, for which Reclamation holds the title.

Stabilizing the cut slopes on the McClusky Canal (MM 0-59) where slope failures have occurred and replacing beach belting where existing material has been eroded are continuing efforts. Repairing slope failures and implementing measures to prevent future failures are to be evaluated with Reclamation.

Obtaining field stone to be used for rip rap throughout the canal for slope stabilization and erosion protection is an ongoing work activity. Garrison Diversion acquires the field stone from landowners with field rock piles near project facilities and then stockpiles the rock on the canal ROW. The rock is screened to separate the soil and sort by size. The soil removed during the process is used as topsoil on other projects for reseeding.

Cleaning, removal, and replacement of buried pipe drains on the McClusky Canal will be completed in accordance with a master schedule. All pipe drains will be maintained in an operational basis and inspected regularly. All drains will be cleaned, as needed, to ensure flows are not obstructed.

#### **b. Water Operations**

Garrison Diversion will cooperate with Reclamation in the management and delivery of project water to various water users for various purposes, including but not limited to the Fish and Wildlife Service, North Dakota Game and Fish Department, park boards, irrigators, landowners and ranchers, for wildlife enhancement, recreation, in-stream flow maintenance, livestock watering, water quality improvement, irrigation, and freshening of the canal and lakes. Monitoring and recording of water supplies, flows, elevations, deliveries, water

quality, and other pertinent water operations information is accomplished periodically at numerous sites by the O&M staff at McClusky. All new requests for water are directed to Reclamation. Reclamation will issue and administer all water service contracts.

Garrison Diversion will operate SCPP as specified in the *LOU for interim Operations of Audubon Lake and COE's Snake Creek Dam and Lake Audubon Reservoir Water Control Manual*. Annual water reports will be submitted to Reclamation.

### C. SPECIFIC WORK ITEMS TO BE PERFORMED

\*\*\* High Priority

\*\* Medium Priority

\* Low Priority

**Note: Joint reviews required are in bold letters.**

#### a. McClusky Canal (MM0-59)

1. Investigate why in-place envelope material is solidifying around O&M road buried pipe v-ditch drains. Buried drains have been in place in the v-ditches since the early 1980s.\*\*
2. Monitor slides between MM 22-23 left and right, **Monitor any existing French drains in the area to determine whether they are functioning and rehabilitate them as necessary. This work is to be coordinated with Reclamation.**\*\*
3. Evaluate the need to replace upper berm drains between MM 41 and 47 and south of the shop.\*\* **Some have been completed; continue to work with Reclamation to determine which need to be completed.**
4. Remove slides near MM 39-40 left. Side slopes will be flattened to a 2.5:1. **Specific plans are to be agreed upon with Reclamation.**\*
5. Install French drains where needed from MM 50-54.\*\*\*
6. Repairs and maintenance at the McClusky shop. Including painting overhead doors on main shop, extend concrete aprons on south side of main building, evaluate the need to re-insulate the north wall and foundation of the shop.\*\*
7. Analyze water operations including radial gates, MM 28 embankment, MM 52 plug, tunnel and MM 58 plug. Develop a feasibility level analysis for supplying water to the McClusky Canal for Alternative 6 (dredging a canal), developed by the USACE, if reservoir elevation restrictions are placed on Lake Audubon.\*\*

8. Re-set cross drain end section at MM 11 (station 641+76) that has separated.\*\*
9. Repair beachbelting in Reach 1 and 3 where fabric is exposed.\*\*
10. Re-set and repair separated cross drains end sections. **Some have been completed; continue to work with Reclamation to determine which need to be completed.**\*\*
11. Replace grease lines and connection to trunnions at MM 38 radial gate.\*\*
12. Repair and/or reset the lower limit switch for the MM 38 left radial gate.\*\*
13. Repair and/or reset the lower limit switch for the MM 55 right radial gate.\*\*
14. Spot clean and recoat corroded areas of the MM 38 radial gates and arms.\*
15. Spot clean and recoat corroded areas of the MM 55 radial gates and arms. Investigate the option to fully remove and recoat gates.\*
16. Repair north end of guard rails on both sides of the county road at the Headworks.\*\*\*
17. Fill in voids under abutments of bridge at MM 24.\*\*\*
18. Fill in voids under abutments of Highway 41 bridge (MM 32).\*\*\*
19. Remove trees from canal embankments.\*\*\*
20. Purchase equipment needed for O&M operations. Equipment to be purchased include: Excavator (300 HP class), 36' gooseneck trailer, bumper pull trailer, and a half-ton pickup truck.

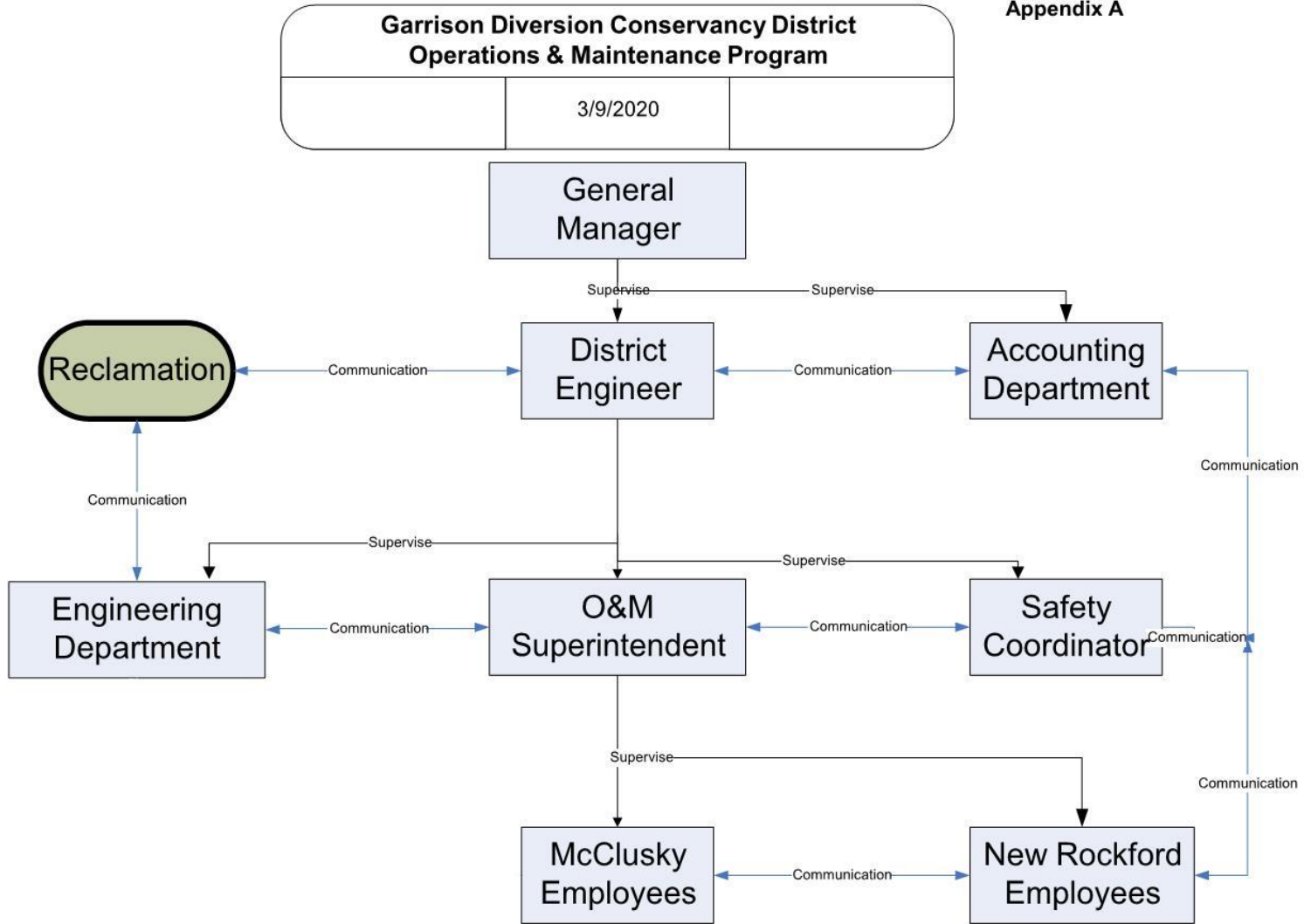
**b. Snake Creek Pumping Plant (SCPP)**

1. Inspect wall thickness of service water pipes. Replace as necessary.\*\*
2. Prepare specifications and contract to recoat Unit #2 and #3 intake elbow from the intake gates to the pump bowl.\*\*\*
3. Install wi-fi throughout the plant.\*\*
4. Investigate replacing the Azone injection system and upgrading the plants domestic water to a potable system.\*\*
5. Update domestic water tank level control system.\*\*

6. Continue automating SCADA system.\*\*
7. Recoat exterior of substation switchgear.\*\*\*
8. Contact Siemens to program motor shutdown and high sump through security system callout.\*\*\*
9. Install camera on west side of superstructure.\*
10. Update Arc Flash study within facility.\*\*\*
11. Replace pumps: (1) Fire Suppression, (1) Domestic Water, (1) Emergency Water.\*
12. Perform DC ramp test and determine baseline for motor cables.\*\*\*
13. Repair/replace outlet wing wall.\*
14. Replace expired safety gear within plant.\*\*\*
15. Investigate options for more maintenance shop storage.\*
16. Insert bearing pad or other material to the cantilever support of the roof access platform on the left wall of the pumping plant.\*\*
17. Inject sealant into the leaking bridge pier cracks, and into the water seeping into the turbine pits and concrete joint along west wall of unit 3.\*\*\*
18. Clean and recoat units 2 and 3 discharge pipe exteriors.\*\*
19. Remove and replace caulking at joints of the metal roof and concrete wall sections.\*\*
20. Clean, reseal, and recoat suction tube drain shutoff valve V253 for Units 1 and 2.
21. Recoat the areas of failed coating on the metalwork of the pumping plant escape access ladders and platforms in rooms 405 and 503 and vent shaft platform on level 4.\*\*
22. Coordinate demo and construction of NAWs intake. Assure safe working and facility security are implemented throughout the construction activities. Gather and store equipment and components that would be beneficial for future maintenance. Coordinate delivery and offload of components hauled to McClusky.\*\*\*

**D. MILESTONES AND COMPLETION DATES**

<b>Tasks</b>	<b>Milestones</b>	<b>Completion Date</b>
1	Annual jetting of Jamestown relief wells	April 15
2	Complete 1 <sup>st</sup> quarter water operations report	April 30
3	Complete maintenance and repairs on equipment, pumping plants and distribution systems in preparation for yearly water distribution	May 1
4	Reach Lake Audubon summer target elevation	May 25
5	Water up pipe laterals and pumping plants for irrigation season	June 10
6	Complete hay auction	June 15
7	Complete spring blading of O&M roads	June 30
8	Sweep bridge decks	June 30
9	Complete 2 <sup>nd</sup> quarter water samples along the McClusky Canal	June 30
10	Complete water deliveries to FWS WDA's	June 30
11	Complete summer mowing of county and township road ditches	July 15
12	Complete 2 <sup>nd</sup> quarter water operations report	July 30
13	Complete fall blading of O&M roads	Sept 1
14	Complete annual noxious weed spraying	Sept 30
15	Annual inspection of bridge abutments	Sept 30
16	Conduct joint annual inspection of New Rockford and McClusky Canals	Sept 30
17	Complete 3 <sup>rd</sup> quarter water samples along the McClusky Canal	Sept 30
18	Complete fall mowing of county and township road ditches	Sept 30
19	Dewater and winterize pipe laterals and pumping plants	Nov 15
20	Complete annual vegetation management report	Dec 31
21	Submit annual water delivery summary	Dec 31



## Appendix B

**GARRISON DIVERSION CONSERVANCY DISTRICT  
MANDATORY ANNUAL SAFETY TRAINING**

Topic	Jan	Feb	Mar	Apr	May	Jun	Jul	Aug	Sep	Oct	Nov	Dec
1st Aid												
CPR												
Defensive Driving												
Skidsteer/Forklift												
Safety Attitude	X											
Cell Phone Safety	X											
JSAs	X											
Safety Conference		X										
Hearing Protection/Survey/Tests				X								
Eye Protection	X	X										
Head Protection	X	X										
Foot Protection	X	X										
Hand Protection	X	X										
Ladders, Slips, Trips & Falls			X									
General Safety Rules				X								
Drug/Alcohol/Medical				X								
Incident/Near Miss Reporting				X								
Health Physicals				X								
Pesticides				X								
Respirator/Fit Testing					X							
Hanta Virus/West Nile					X							
CPR/Bloodborne Pathogens					X					X		
Welding					X							
Compressed Gases					X							
Working Outdoors						X						X
Fire Protection/Mean of Egress/Emergency Plans						X						
Trenching/Excavation							X					
Lockout/Tagout Verifications							X					
Machine Guarding							X					
Hand/Power/Stationary Tools							X					
Hazard Communication/Materials/MSDS								X				
Ergonomics								X				
Housekeeping									X			
Scaffolding									X			
Rigging/Hoisting/Slings/Chains									X			
Electrical Safety										X		
Back Safety											X	
Carbon Monoxide											X	
Confined Spaces											X	
Ice/Winter Safety												X
Battery Safety												X
Asbestos												X
Painting												X
Miscellaneous Training												X

Appendix C

**GARRISON DIVERSION UNIT  
OPERATION, MAINTENANCE, and  
REPLACEMENT WORKPLAN  
FOR OTHER PROJECT WORKS**

**January 1, 2025- December 30, 2025**

November 1, 2024



## TABLE OF CONTENTS

<b>A.</b>	<b>Purpose</b> .....	14
<b>B.</b>	<b>General</b> .....	14
<b>C.</b>	<b>Routine OM&amp;R Work</b> .....	15
a.	McClusky Canal (MM 59-74) and New Rockford Canal.....	15
b.	Radio Towers.....	16
c.	Jamestown Dam.....	16
d.	McClusky Canal Recreation.....	16
e.	Other GDU Project Facilities.....	16
<b>D.</b>	<b>Specific work Items</b>	
a.	McClusky Canal.....	17
b.	New Rockford Canal.....	17
c.	Arrowwood National Wildlife Refuge.....	18
d.	Audubon National Wildlife Refuge.....	18
e.	Lonetree.....	18
f.	Scattered Tracts.....	18
g.	Radio Towers.....	18
h.	Jamestown Dam.....	19
i.	McClusky Canal Recreation.....	19
<b>E.</b>	<b>Milestones and Completion Dates</b> .....	19

## I. INTRODUCTION

### A. Purpose

This document presents Reclamation's annual operation, maintenance, and replacement (OM&R) workplan as required by OM&R Transfer Contract 20XX620109. It details work items presented to Garrison Diversion to be performed on Other Garrison Diversion Unit (GDU) Project Works, in addition to the Transferred Project Works.

### B. General

Reclamation will annually submit an OM&R workplan listing work items for Other GDU Project Works to Garrison Diversion for consideration to complete. This is a dynamic document that may change, depending on actual conditions encountered. All significant changes and activities will be closely coordinated between Reclamation and Garrison Diversion. Before any major unscheduled work item is undertaken, Reclamation and Garrison Diversion will verbally concur on schedule and budget. Routine work will be performed in accordance with this annual workplan. Accomplishments will be reported to Reclamation along with accomplishment reports for the transferred works.

Other GDU Project Works, included in this Workplan: McClusky Canal mile-marker (MM) 59-74, New Rockford Canal, Lonetree Wildlife Management Area, Jamestown Dam, Arrowwood and Audubon National Wildlife Refuge mitigation features, Scattered Tracts wildlife development areas, radio towers, State and Tribal MR&I, and McClusky Canal recreation facilities. Work and costs will be tracked separately for each facility by Garrison Diversion and fully reimbursed by Reclamation according to OM&R Transfer Contract 20XX620109.

The workplan is divided into two parts, routine and specific work activities. Section C below discusses the routine OM&R work to be performed by area. All routine work is considered high priority.

Specific work activities, which have been identified during various field reviews, are listed in Section D under their respective location subheadings. **The priorities for these specific work activities are shown by each individual item.**

Garrison Diversion should track maintenance in a Facilities Maintenance Checklist. Joint OM&R reviews may be scheduled between Reclamation and Garrison Diversion to ensure work is being accomplished within agreed upon priorities, schedules, and budget.

## C. Routine OM&R Work

### a. McClusky Canal (MM 59-74) and New Rockford Canal

Garrison Diversion is to perform all maintenance of buildings and yards and provide janitorial services for all office, shop, and storage facilities at New Rockford.

Canals and associated facilities are to be monitored for slides, erosion, drainage and other problems on at least a weekly basis. Some activities, such as reading wells and monitoring water elevations and flows, have specific schedules to follow to ensure that all drainage facilities are operating correctly and desirable water levels in the canals are maintained within reason. On the New Rockford Canal, slides within the canal prism should be covered with gravel material available from Reclamation's cleared Lonetree gravel pit to protect O&M roads and to cover canal lining.

Vegetation management along the canals includes several control methods such as aerial and ground spraying, mowing, grazing, burning, or other biological non-chemical control methods.

Activities along the canal such as repairing and removing fence, cleaning or removing cattle guards, and other general right-of-way related maintenance are to be performed as needed.

Blading, vegetation control on roads, graveling when needed, filling holes, clearing material deposited from small landslides, and other miscellaneous maintenance items are to be performed as needed on the McClusky Canal (MM 59-74) O&M roadways to maintain at least one passable O&M road along the length of the canal. The New Rockford Canal O&M roads are to be maintained with chemical and mowing methods, with blading only as necessary. County roads are to be mowed in accordance with county regulations.

Maintenance on all structures is to be performed as required so that structures are unobstructed and meet current operational needs. A master schedule detailing all structures and a schedule for inspecting each type of structure is to be maintained. A schedule is to be maintained for recoating structures and equipment to maintain the life, safety, operating efficiency, and appearance of the structures and equipment.

Reclamation will conduct certified bridge inspections biennially on all Type I bridges, in accordance with their inspection schedule. Garrison Diversion is to annually inspect all bridge abutment within McClusky Canal MM 59-75 and New Rockford Canal. Garrison Diversion is to maintain McClusky Canal MM 59-74 bridges markers, attenuation systems, and remove any gravel

from the bridge decks.

Cleaning, removal, and replacement of buried pipe drains in McClusky MM 59-74 and New Rockford is to be completed in accordance with a master schedule. The schedule also includes jetting Jamestown Dam relief wells and toe drains. All pipe drains are to be maintained in an operational basis and inspected regularly. All drains are to be cleaned, as needed, to ensure flows are not obstructed.

Water operations on the McClusky Canal MM 59-74 and New Rockford Canal are to be maintained in a dewatered condition as much as practical.

**b. Radio Towers**

Garrison Diversion is to maintain the towers, buildings, and grounds at Dogden Butte and Prophets Mountain radio tower sites. Noxious weed control and site security are to be performed at the Harvey, Jamestown, LaMoure, and Devils Lake sites.

**c. Jamestown Dam**

Garrison Diversion is to: jet clean the eight relief wells in the spring and fall; jet clean the horizontal drains and pipes in the spring; mow and spray the dam site area in late June and in mid-September; and remove snow as required to keep access in winter.

**d. McClusky Canal Recreation**

For areas open to the public, maintain lands and facilities necessary to provide minimum basic facilities to meet public health and safety standards, primarily in the Chain-of-Lakes Area. This includes routine maintenance of restroom facilities, boat docks, boat ramps, parking areas, camp sites, fire rings, signs, and garbage pickup. It also includes spraying noxious weeds and managing the vegetation, mowing parking areas and fire breaks. Standing operating procedures (SOP) have been developed for describing the facilities, O&M activities, schedules, and procedures. The SOP is reviewed annually and updated as necessary by Reclamation and Garrison Diversion.

**e. Other GDU Project Works**

Reclamation may ask Garrison Diversion to provide assistance on maintenance of other GDU Project Works as needed. This work is typically short-term projects, occurs unexpectedly, and is difficult to plan for. An example of this type of work item, which has occurred in the past, is setting-up emergency pumping operations for Tribal MR&I systems. Garrison Diversion has the equipment and personnel expertise to complete this work in the most efficient and economical manner without disruption to another

OM&R work on the GDU. In the event such work activities occur, they will be handled as unscheduled work activities and closely coordinated between Reclamation and Garrison Diversion.

#### D. Specific Work Items

\*\*\* High Priority

\*\* Medium Priority

\* Low Priority

##### a. McClusky Canal (MM 59-74)

- Fix v-ditch at MM 62L.\*
- Remove any trees within 100 feet from any canal embankment/fill areas. \*\*\*
- Inspect all cross-drainage siphons and culverts and re-set or grout end sections that have separated. \*\*

##### b. New Rockford Canal

- Inspect and repair cross drain end sections that have separated from the conduits. \*\*\* (O&M Recommendation 2019-2-C)  
It is suggested that two cables or bars be attached from the end section to the conduit to prevent separation from happening again.
- Repairs at the cross drain at MM 28.5L need to be completed. Resetting the inlet may not be possible. Repairs could include grouting, installing a metal plate, or tie the inlet and the culvert with metal strapping.\*
- Monitor the voids under abutments concrete pile caps of bridges NR 1-7, NR 1-8, and NR 1-9. Add material to the bridge abutments in the canal prism that are exhibiting settling. It is suggested to fill to a 3:1 slope. Need to backfill the abutments of bridge NR 1-12. Additional settlement has occurred at the previous grouted repair. \*
- Seal significant cracks in the outlet headwall at Siphon NR 1-11.\*\*\* (O&M Recommendation 2021-2-A)
- Repair pump No. 1 of the relief well located at approximate MM 7.4 (station 389+80). - Pump has been installed, but discharge pipeline within manhole needs repair. (O&M Recommendation 2019-3-A). Pump and pipe have been replaced but pump failure occurs in short order. Research pump replacement options to prolong life of electric pump.\*
- Woody vegetation should be sprayed or removed from within the prism of the canal and bridge prisms. \*\*\*

- Work with Eddy County (their request) to install culvert through canal along Hwy 281.\*

**New Rockford Office**

No specific work scheduled for 2025.

**c. Arrowwood National Wildlife Refuge**

- Inspect and replace the wire connection to electrode #6 in the West Culvert.\*\*\*
- Install the new water level sensor.\*\*\*
- Place rip rap near radial gate structure. FWS has rocks and will haul to the area.\*\*

**d. Audubon National Wildlife Refuge**

- Gather field stones for later use on Audubon dike repairs, stockpile at the McClusky Canal Headworks. Gather and screen rockpiles on refuge as directed by FWS. \*
- Place rip rap in the eroded areas on Norland dike.\*\*\* Coordinate timing, access, and rocks with FWS.

**e. Lonetree**

No specific work schedule for 2025.

**f. Scattered Tracts**

No specific work scheduled for 2025.

**g. Radio Towers**

- Work together with Reclamation to decommission radio tower sites as determined necessary. \*
- Conduct a joint site review of all radio tower sites with Reclamation. \*

h. **Jamestown Dam**

- Offload and set the new concrete inspection well covers.\*\*

i. **McClusky Canal Recreation**

- Gravel access roads at COL.\*
- Shoreline stabilization at New Johns.\*\*
- East Park Lake campsites access road\*\*

**E. MILESTONES AND COMPLETION DATES**

<b>Tasks</b>	<b>Milestones</b>	<b>Completion Date</b>
1.	Clean and prepare Chain of Lakes for public use.	May 20
2.	Complete hay auction.	June 15
3.	Inspect and maintain Chain of Lakes for public use.	June 30
4.	Complete spring blading of roads.	June 30
5.	Sweep bridge decks.	June 30
6.	Jamestown spring mowing, spraying, & jetting of relief wells.	July 1
7.	Complete summer mowing of county and township road ditches.	July 15
8.	Complete fall blading of O&M roads.	Sept. 1
9.	Inspect and maintain Chain of Lakes for public use.	Sept. 20
10.	Complete annual noxious weed spraying.	Sept. 30
11.	Annual inspection of bridge abutments.	Sept. 30
12.	Conduct joint annual inspection of New Rockford and McClusky Canals.	Sept. 30
13.	Complete fall mowing of county and township road ditches.	Sept. 30
14.	Jamestown fall mowing, spraying, & jetting of relief wells.	Sept 30

## Appendix D

## OMR Contract # 20XX620109

## Budget FY 2025

BUDGET ITEM DESCRIPTION	Transferred Works Jan 1 to Dec 31, 2025	Other Project Works Jan 1 to Dec 31, 2025	Total Budget Jan 1 to Dec 31, 2025
<b>SALARIES AND WAGES</b>			
O&M Wages	\$ 853,000.00	\$ 226,700.00	\$ 1,079,700.00
Management Salaries	\$ 130,536.00	\$ 45,864.00	\$ 176,400.00
<b>Total Wages</b>	\$ 983,536.00	\$ 272,564.00	\$ 1,256,100.00
<b>FRINGE BENEFITS</b>			
O&M Benefits	\$ 436,712.00	\$ 116,088.00	\$ 552,800.00
Management Benefits	\$ 65,850.00	\$ 21,950.00	\$ 87,800.00
<b>Total Benefits</b>	\$ 502,562.00	\$ 138,038.00	\$ 640,600.00
<b>TRAVEL</b>			
Travel	\$ 2,760.00	\$ 8,740.00	\$ 11,500.00
<b>TRAINING</b>			
Training	\$ 473.00	\$ 627.00	\$ 1,100.00
<b>EQUIPMENT</b>			
Equipment Maintenance	\$ 146,200.00	\$ 68,800.00	\$ 215,000.00
Equipment Lease	\$ 4,000.00	\$ -	\$ 4,000.00
Equipment Purchase	\$ 181,030.00	\$ 239,970.00	\$ 421,000.00
<b>Total Equipment</b>	\$ 331,230.00	\$ 308,770.00	\$ 640,000.00
<b>SUPPLIES/MATERIALS</b>			
Supplies	\$ 81,200.00	\$ 121,800.00	\$ 203,000.00
Materials	\$ 207,000.00	\$ 30,000.00	\$ 237,000.00
<b>Total Supplies &amp; Materials</b>	\$ 288,200.00	\$ 151,800.00	\$ 440,000.00
<b>CONTRACTUAL SERVICES</b>			
Engineering	\$ 51,720.00	\$ 54,480.00	\$ 106,200.00
Professional Services	\$ 100,000.00	\$ -	\$ 100,000.00
<b>Total Contractual Services</b>	\$ 151,720.00	\$ 54,480.00	\$ 206,200.00
<b>OTHER</b>			
Utilities	\$ 22,890.00	\$ 53,410.00	\$ 76,300.00
Safety	\$ 27,243.00	\$ 15,812.00	\$ 43,055.00
Miscellaneous	\$ 4,914.00	\$ 13,986.00	\$ 18,900.00
<b>Total Other</b>	\$ 55,047.00	\$ 83,208.00	\$ 138,255.00
<b>TOTAL DIRECT COSTS</b>	\$ 2,315,528.00	\$ 1,018,227.00	\$ 3,333,755.00
<b>INDIRECT COSTS</b>			
<b>TOTAL INDIRECT COSTS- Rate 30.77%</b>	\$ 630,938.23	\$ 230,238.68	\$ 861,176.91
<b>TOTAL PROJECT COSTS</b>	\$ 2,946,466.23	\$ 1,248,465.68	\$ 4,194,931.91





\*Transferred works include:

Snake Creek Pumping Plant  
McClusky Canal O&M (MM 0-59)  
McClusky Canal ROW (MM 0-59)  
Carrington HQ non-routine costs

\*\*Other Project works include:

McClusky Canal O&M (MM 59-74)  
McClusky Canal ROW (MM 59-74)  
McClusky Canal Recreation  
New Rockford Canal & Radio Towers  
Arrowwood National Wildlife Refuge  
Audubon National Wildlife Refuge  
Lonetree  
Scattered Tracts  
Jamestown Dam  
Tribal MR&I

**Garrison Diversion Conservancy District  
Operations and Maintenance Division  
Committed Funds from Year 2024**

<u>Equipment</u>		<u>Amount</u>
Tandem Axle Dump Truck	\$	183,167.00
Tandem Axle Dump Truck	\$	183,164.00
<b>Total Equipment Contracts</b>	<b>\$</b>	<b>366,331.00</b>
<u>Contracted Services</u>		
	\$	-
<b>Total Contracted Services</b>	<b>\$</b>	<b>-</b>
<u>Professional Services</u>		
Task Order 1.25 - SC REM Alt Feasibility	\$	27,653.00
<b>Total Professional Services</b>	<b>\$</b>	<b>27,653.00</b>
<b>Total Committed Funds</b>	<b>\$</b>	<b>393,984.00</b>
<u>Total Committed Funds Subject to Indirect</u>		
	\$	27,653.00
	\$	27,653.00
Indirect Cost Rate 2024		<u>23.88%</u>
<b>Indirect Cost on Committed Funds</b>	<b>\$</b>	<b>6,846.88</b>
<b>Total Cost Committed Funds</b>	<b>\$</b>	<b>400,830.88</b>

Garrison Diversion Conservancy District  
Operations and Maintenance Division  
Estimated Appropriation

2024 Committed Funds	\$	400,830.88
<u>2025 Program Work Budget</u>	\$	<u>4,194,931.91</u>
<b>2025 Estimated Funds Needed</b>	<b>\$</b>	<b>4,595,762.80</b>

## 2025 Maintenance Work Plan Devils Lake Outlet

State Water Commission  
and  
Garrison Diversion Conservancy District

January 3, 2025

### 1) Introduction

The State Water Commission (SWC) owns and manages the Devils Lake Outlet. The outlet consists of an intake located on Round Lake, two pumping stations, 10.3 miles of canal, 3 miles of pipeline and an outlet discharge structure. The Garrison Diversion Conservancy District (Garrison Diversion) has a Memorandum of Understanding dated April 21, 2006, with the SWC to perform general maintenance work.

All work is coordinated and requested by the Devils Lake Outlet manager. Routine work items will be scheduled between the outlet manager and the New Rockford foreman.

Additional work items will be coordinated between the outlet manager and the O&M Superintendent at McClusky. Sufficient time should be allowed for Garrison Diversion to mobilize their work force. A summary of work items should be sent to Garrison Diversion in April of each year.

### 2) Contacts

- i) SWC – Jeff Trana, Outlet Manager (701) 527-4873
- ii) SWC – Chris Korkowski, Investigations Section Chief (701) 328-2762
- iii) Garrison Diversion - Vern Schafer, O&M Operator II (701) 947-2001
- iv) Garrison Diversion - Darren Murray, O&M Superintendent (701) 363-2950
- v) Garrison Diversion - Kip Kovar, District Engineer (701) 652-3194
- vi) Garrison Diversion - Scott Mehring, Master Electrician (701) 947-2001

### 3) Routine Work

- i) Spraying - Typically, spraying will be accomplished twice a year. Garrison Diversion will spray once in the spring, and the SWC will spot spray in the fall. The outlet manager will assist Garrison Diversion in identifying all outlet right-of-ways.
- ii) Mowing - The outlet manager will identify areas which are to be mowed twice a year. State law opens mowing on July 15 of each year.
- iii) Fence Repair - The outlet manager will identify areas to be fixed. Supplies will be provided by the SWC.
- iv) Water Sampling - Weekly water samples are taken and sent to the North Dakota Health Department. Twelve locations on the Red and Sheyenne Rivers are sampled each week. On the Sheyenne River, three sites are near the West Outlet,

and one each at Warwick, East Outlet, Tolna Dam, Pekin, Cooperstown, Lake Ashtabula, Baldhill Dam, Lisbon and Horace. On the Red River, the sites are at Harwood and Halstad. Sampling at the Lake Ashtabula, Harwood and Halstad sites are rotated every other week and the Tolna dam site is sampled twice a summer.

- v) Operating Outlet - Garrison Diversion provides one employee to work directly with the Devils Lake Outlet manager on an on-call basis to operate the facilities.
- vi) Weed Removal - The open canal, along with trash racks, need to be cleaned due to weed growth in the canal. Equipment required in the past has included anything from a hand rake up to a small excavator.

#### **4) Additional Work Items**

- i) Erosion control will be coordinated in conjunction with water operations.
- ii) Additional items to be coordinated with the State Water Commission.
- iii) All of the above work items also apply to the newly constructed East End Outlet.

**DRAFT**  
**2025 WORK PLAN**  
**Garrison Diversion Conservancy District**

**A. Engineering & Operations**

1. Maintain quality staff and equipment
2. Implement "5-Year Work Plan"
3. Complete 2025 annual work plan on GDU facilities
4. Complete 2025 annual work plan for Devils Lake Outlet maintenance
5. Complete 2025 LAWA water quality monitoring plan
6. Complete 2025 work plan for McClusky Canal Irrigation Projects
7. Assess the future utilization of the New Rockford Canal
8. Complete earthwork portion of Major Slide Project
9. Assist Bureau of Reclamation with NAWS construction in the Snake Creek Pumping Plant

\* 2025 additions

**Garrison Diversion Conservancy District  
Budget Expenditures**

<b>GDU O&amp;M</b>	<b>2024 *</b>	<b>2025</b>
Salaries & Benefits	\$1,768,600	\$1,803,972
Salaries	\$ 1,188,200	\$ 1,211,964
Benefits	\$ 580,400	\$ 592,008
Travel	\$ 11,100	\$ 11,322
Training	\$ 2,700	\$ 2,754
Utilities	\$73,900	\$ 75,378
Contracted Services (Eng / Survey)	\$279,500	\$ 285,090
Supplies	\$214,000	\$ 218,280
Equipment Purchases	\$1,001,000	\$ 370,000
Small Equipment Purchases	\$15,000	\$ 15,300
Equipment Rental	\$7,000	\$ 7,140
Equipment Maintenance	\$300,000	\$ 306,000
Safety	\$53,000	\$ 54,060
Miscellaneous	\$16,900	\$ 17,238
Materials	\$237,000	\$ 241,740
<b>Total O &amp; M</b>	<b>\$3,979,700</b>	<b>\$3,408,274</b>
<b>Indirects</b>	<b>\$698,418</b>	<b>\$667,812</b>

\* Original 2024 Approved Budget



Asset No.	Type	Description
107	Dozer	2019 D6 Dozer
108	Dozer	2010 D8 Dozer
218	Loader	821XR Case Loader
219	Loader	2014 950K Loader
220	Loader	2017 Doosan DL250-5
253	Forklift	99 Hyster 60 Forklift
254	Skidsteer	2021 Bobcat T770
256	Skidsteer	2017 T770 Bobcat
257	Skidsteer	2017 T770 Bobcat Track Loader
258	Skidsteer	2021 Bobcat 5600T Toolcat Mowere, Snowblower
260	Backhoe	2022 Case 580SN WT
333	Excavator	Bobcat E85
334	Excavator	2014 329L Excavator
335	Excavator	2015 Volvo EC350EL
353	Miscellaneous	1986 GMC Boom Water Truck
358	Miscellaneous	2022 Freightliner Vac Truck
409	Dump Truck	2022 Freightliner Truck
431	Dump Truck	2007 Sterling Dump Truck
432	Dump Truck	2007 Sterling Dump Truck
433	Dump Truck	2013 Mack Elliptical Truck
434	Dump Truck	2014 Mack Truck
435	Dump Truck	2017 Mack Truck
436	Dump Truck	2017 Mack Truck
437	Dump Truck	2017 Western Star
447	Semi	2006 Semi Kenworth
448	Semi	2012 Freightliner
450	Trailers	Pipe Trailer
451	Trailers	2021 Aluma 8114SR Utility Trailer
452	Trailers	Low BoY Trailer
453	Trailers	Fuel/Def Trailer-FST990
454	Trailers	Load King 2466 Belly Dump
455	Trailers	Load King 2466 Belly Dump
456	Trailers	28' Gooseneck-Sold GDCD
456	Trailers	2020 DCT 833WT Gooseneck
457	Trailers	
458	Trailers	2013 Utility Office Trailer
459	Trailers	Big Tex 20' Car Trailer
460	Trailers	2022 Big Tex 14ET-22BK-MR
461	Trailers	2015 Big Tex Gooseneck
462	Trailers	Paint Cargo Trailer
463	Trailers	1994 Semi-Van Trailer
464	Trailers	ATV Trailer

Asset No.	Type	Description
466	Trailers	Pintle Hook 28' Trailer
467	Trailers	Enclosed Drill Rig Trailer
468	Trailers	Enclosed Trailer(job)
469	Trailers	Enclosed Trailer(job)
470	Trailers	20' Car Trailer
471	Trailers	2009 Heavy Haul
472	Trailers	Flatbed Trailers
	Miscellaneous	Coats Truck Tire Machine
	Miscellaneous	Tire Balancer
	Miscellaneous	Hofman Tire Changer
	Miscellaneous	Blue Office Trailer
475	Trailers	Orange Fuel Trailer-NR
476	Trailers	Pipe Trailer
477	Trailers	Pipe Trailer
478	Small Special	Spiffy Biff
479	Small Special	Compactor for Excavator
480	Small Special	Power Creed
481	Small Special	Chain Saw
482	Small Special	Wacker Compactor
483	Small Special	Flat Plate Compactor
484	Small Special	Concrete Saw
485	Small Special	Chop Saw
486	Small Special	Weed Eater
487	Small Special	Push Mower
488	Small Special	Pressure Washer
489	Small Special	80" Brushcat
653	Mower	2020 Ferris Mower
490	Small Special	Post Hole Digger
491	Small Special	Pallet Forks
492	Small Special	Grapple Forks
493	Small Special	Trencher
494	Small Special	36" Power Troll
495	Small Special	Soft Cut Saw
496	Small Special	2011 185 Air Compressor
497	Small Special	Laser Plane
498	Small Special	Laser Plane
499	Small Special	Broom for Skidsteer
501	Small Special	Rock Picker
502	Small Special	12' Ford Disc
503	Small Special	Shop Metal Cutting Saw
504	Small Special	Cement Mixer
506	Miscellaneous	2013 Spray Truck
507	Small Special	Ice Auger

Asset No.	Type	Description
508	Small Special	Ice Auger
509	Small Special	Iron Worker
510	Small Special	Bobcat Snowblower Attach
511	Small Special	Marco Sandblaster
512	Small Special	Schmidt Sandblaster
513	Small Special	Bomag Jumping Jack Compactor
514	Small Special	Sheeps Foot Roller
515	Small Special	Light Plant
516	Small Special	Bob Installer
517	Small Special	Aaladin Pressure Washer
518	Small Special	Bobcat Snowblower Attach
519	Small Special	Grizzly
521	Small Special	Seeder Transferred from LT
522	Major Slide	Birchland Straw Crimper
523	Major Slide	Haybuster 2660 Bale Processor
524	Major Slide	Bale Spear
525	Small Special	Fence Winder
564	Blade	160MA 3 Motor Grader
655	Mower	Ferris Mower
657	Mower	Ferris Mower
707	Mower	Rouse 9 Foot 3 PT Mower
661	Tractor	2011 Case 130 Puma
663	Tractor	2019 Case 185 Puma
665	Tractor	5610 Ford Tractor
666	Tractor	2017 Kioti PX 1053
667	Tractor	Challenger 485TD
670	Tractor	5610 Ford Tractor
674	Specialty	1974 Delphi Boat/Trailer
675	Specialty	Monarch Boat/Trailer
676	Specialty	Pontoon
677	Specialty	2011 Tree Spade
679	Specialty	Small Boat Trailer
680	Specialty	Portable Shed On Trailer
695	ATV	2021 CanAm
696	ATV	2015 Polaris 6x6
698	ATV	2023 Can Am Defender
699	ATV	2004 Polaris Sportsman
700	ATV	1994 Polaris ATV
701	698+B140:G140	Indy Widetrack Polaris
702	Specialty	1993 3pt Snowblower
704	Specialty	2001 Nordberg Rock Screen
706	Sprayers	3Pt Sprayer for 5130
708	Mower	235 JD Riding Mower

Asset No.	Type	Description
710	Mower	930D Grasshopper
712	Mower	2020 Schulte Batwing Mower
717	Mower	Jerry Mower-Troybilt
718	Mower	FX1800 Schulte Batwing
720	Specialty	Haybuster Drill/Grain Drill
721	Sprayers	2023 Apache Sprayer
722	Sprayers	Ranger Road Sprayer
723	Sprayers	UTV Sprayer F/S Pro
724	Sprayers	2009 Pickup Mounted
725	Sprayers	2009 Pickup Mounted
726	Specialty	Drill Rig for F450 Ford
727	Sprayers	ATV Sprayer
728	Specialty	Gas Drill
751	Pumps	10" JD Pump-1990 Cornell
752	Pumps	
753	Pumps	3" Honda Pump-WT3ox
754	Pumps	6" Godwin Dri-Pump
755	Pumps	2" Honda Transfer-Water Truck
757	Pumps	16" Crissafulli
758	Pumps	2" Briggs/Stratton-Shop Water Tank
759	Pumps	1992 GX160 2"-Spray Water Truck
760	Pumps	3" Pump
761	Pumps	12" Cat 3126 Motor
761	Pumps	Cornell Pump 10RB-RP-F18D8
	Pumps	Model 3126 Industrial Motor
762	Pumps	6" Cornell Pump Trailer
763	Pumps	16' Crissafulli Pump, Self Propelled
777	Pumps	2" Trash Pump-GX160
778	Pumps	Black Honda Pump-6.0
779	Pumps	Red Honda Pump-Vac Truck
782	Pumps	8HP Honda Wacker Pump
801	Pumps	Hearte Butte Pump
803	Specialty	Honda 6500 Generator
806	Specialty	GPS/Sonar
807	Specialty	Honda Air Compressor
808	Specialty	A/C Reclaimer
810	Specialty	Honda Suitcase Generator
830	Pickups/SUV	2018 Dodge Tradesman-Ryan
832	Pickups/SUV	2020 Ford F350 4WD
833	Pickups/SUV	2020 Ford Expedition
834	Pickups/SUV	2021 F250
839	Pickups/SUV	2017 Dodge Ram Dually
841	Pickups/SUV	2017 Chevy Flatbed

Asset No.	Type	Description
850	Service Trucks	2017 Freightliner Service
851	Service Trucks	Enpac Unit-850 Service Truck
852	Pickups/SUV	2017 Dodge Ram
862	Pickups/SUV	2008 Chevy K2500
863	Pickups/SUV	2023 Chevy Silverado
864	Pickups/SUV	2019 Ford F350
865	Service Trucks	2008 F350 Electrical
868	Pickups/SUV	2018 F250 Pickup-Scott's
869	Pickups/SUV	2024 Ram 3500 D28L92
873	Pickups/SUV	2010 Ford Expedition
899	Pickups/SUV	2010 Ford 1/2 Ton
901	Major Slide	JD Tractor #1
902	Major Slide	JD Tractor #2
903	Major Slide	Case Tractor#1
904	Major Slide	Case Tractor#2
911	Major Slide	JD Scraper #1
912	Major Slide	JD Scraper #3
913	Major Slide	Ktec Scraper#1
914	Major Slide	Ktec Scraper#3
921	Major Slide	JD Scraper #2
922	Major Slide	JD Scraper#4
923	Major Slide	Ktec Scraper#2
924	Major Slide	Ktec Scraper#4
930	Major Slide	349F Excavator
940	Major Slide	Freightliner Water Truck
	Major Slide	Leicha Machine Control
	Pickups/SUV	1999 Ford F450
	Small Special	Winch for D8
	Small Special	Integrated Tool Carrier
	Small Special	Diamon Air Compressor