

T-144-N

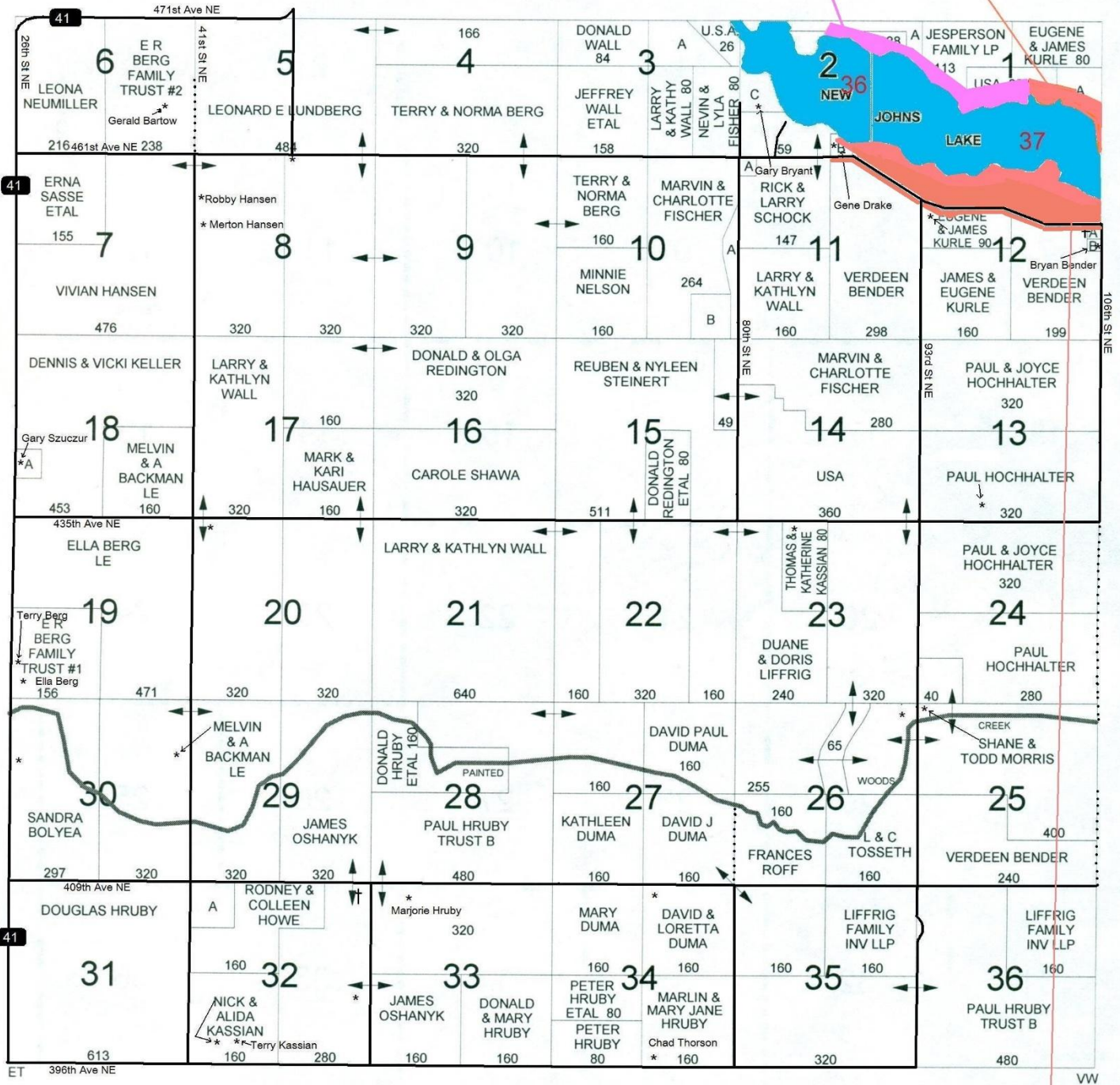
MC 36L = 55/A

WILSON PLAT

CODE: BX

MC 37L = 32/A

R-79-W



MC 37R = 120.7 /A
 with both ditches by
 county road (see signs)

T-144-N

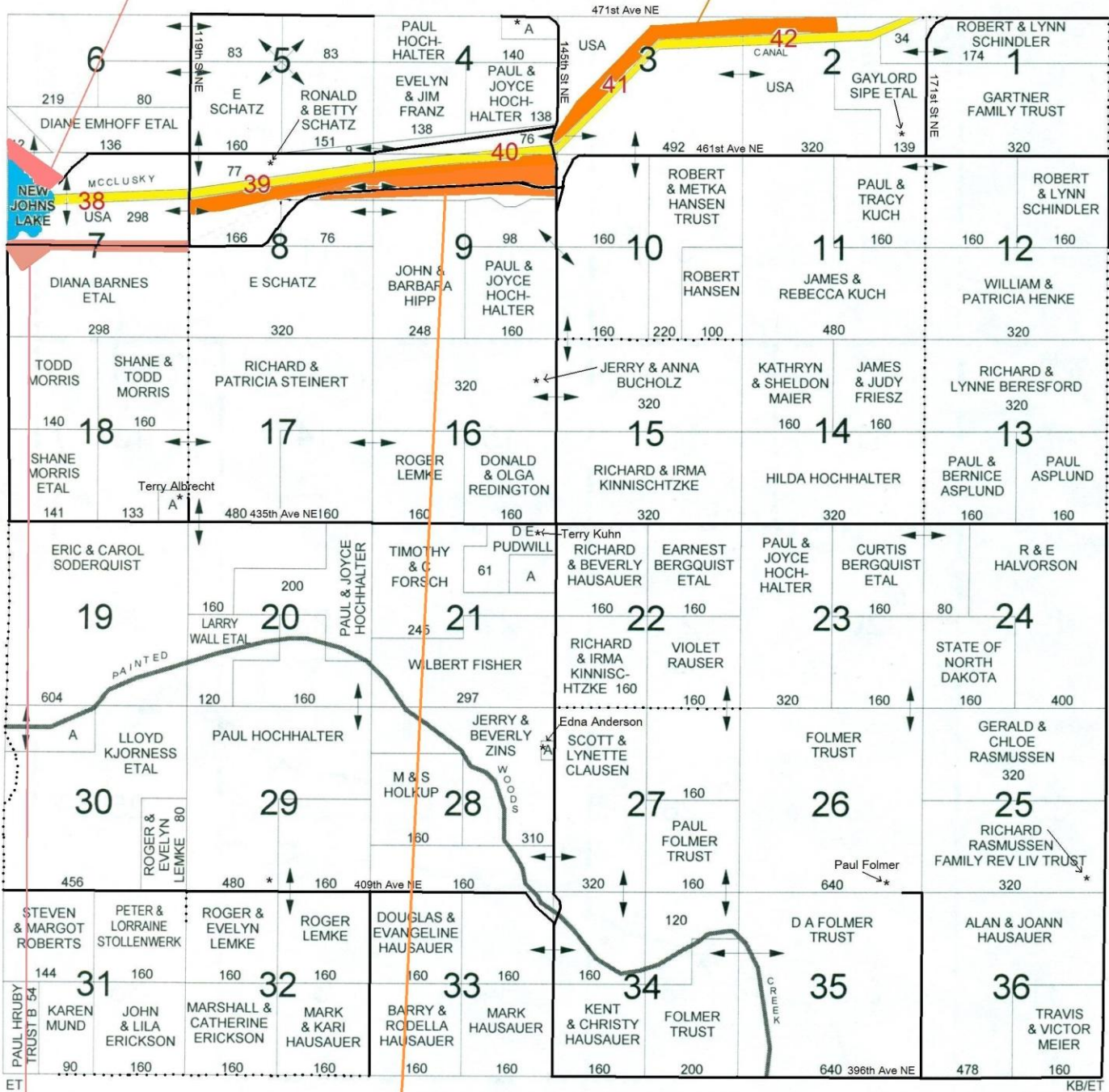
MC 37L = 32/A

STEIBER PLAT

CODE: BQ

MC 41L = 47.5 /A

R-78-W



MC 39R = 90/A

MC 37R = 120.7/A

both county road
ditches (see signs)